

Technical manual

LioN-P PROFINET IO-Link Master

0980 ESL 308-121

0980 ESL 309-121

0980 ESL 109-121

0980 ESL 109-332

0980 ESL 109-122

0980 ESL 109-331

Content

1	About this manual	7
1.1	General information	7
1.2	Explanation of symbols	8
1.2.1	Use of danger information	8
1.2.2	Use of general information	8
1.3	Version information	9
2	Safety instructions	11
2.1	Intended use	11
2.2	Qualified personnel	12
3	Designations and synonyms	13
4	System description	15
4.1	PROFINET product features	15
4.2	I/O port features	17
4.3	Integrated web server	19
4.4	Other features	19
4.5	Product overview	20
5	Assembly and wiring	21
5.1	General information	21
5.2	Outer dimensions	22
5.2.1	Module 0980 ESL 308-121 & ESL 309-121	22
5.2.2	Module 0980 ESL 109-121	23
5.2.3	Module 0980 ESL 109-332	24
5.2.4	Module 0980 ESL 109-122	25
5.2.5	Module 0980 ESL 109-331	26
5.3	Port assignments	28
5.3.1	PROFINET ports, M12 socket, 4-pin, D-coded	28
5.3.2	Power supply with M12 power L-coded	29
5.3.3	PROFINET and power supply with M12 Hybrid	30
5.3.4	I/O ports as M8 or M12 sockets	31

6	Starting operation	35
6.1	GSDML file	35
6.2	Reading the MAC addresses	35
6.3	State on delivery	36
6.4	Configuration of the LioN-P PROFINET I/O modules in STEP 7	36
6.4.1	Assigning a unique device name	36
6.4.2	Assigning a device name to a LioN-P module	37
6.4.3	Configuring the IO-Link channels	38
6.4.4	Parameterization of the IO-Link channels	43
6.4.5	Parameterization of the status/control module	50
6.4.6	Surveillance Timeout Configuration (LioN-P 60 devices)	54
6.4.7	Digital input logic	55
6.4.8	Digital-I/O mode for Ch. B/Pin 2	56
6.5	IO-Link device parameterization	58
6.5.1	SIEMENS IO-Link library	58
6.6	SNMP	60
6.7	Media Redundancy Protocol (MRP)	61
6.8	Identification & maintenance functions (I&M)	63
6.8.1	Supported I&M features	63
6.8.2	Reading and writing I&M data	66
7	Bit assignment	69
7.1	Process data Status and Control module, slot 1/sub-slot 1	69
7.1.1	Digital IO mapping mode 1 (default mapping)	69
7.1.2	Digital IO mapping mode 2 (E2C compatibility)	73
7.2	Process data IO-Link ports, slot 1/sub-slot 2 - sub-slot 9	77
8	Diagnostics processing	79
8.1	Error in the system/sensor power supply	79
8.2	Error in auxiliary/actuator power supply	80
8.3	Overload/short-circuit of the I/O port sensor supply outputs	80
8.4	Overload/short circuit of the digital 500 mA outputs	81
8.5	Overload/short circuit of the digital 2.0 A outputs	81
8.6	Overload/short circuit of the type B port aux. power supply	82

8.6.1	For LioN-P 30 devices	82
8.6.2	For LioN-P 60 devices	83
8.7	IO-Link C/Q error	83
8.8	IO-Link device diagnostics	83
9	Port Configuration Tool	87
10	The integrated web server	89
10.1	The Status page	90
10.2	The Ports page	93
10.3	The System page	94
10.4	The User page	96
11	Technical data	97
11.1	General	97
11.2	PROFINET protocol	97
11.3	Power supply for the module electronics/sensors	98
11.4	Power supply type B ports (auxiliary supply)	99
11.5	IO-Link master ports (X1-X8, Ch. A/C/Q/ Pin 4)	99
	11.5.1 Configured as a digital input	99
	11.5.2 Configured as a digital output (except 0980 ESL 308-121)	100
	11.5.3 Configured as an IO-Link port in COM mode	100
11.6	Digital inputs (X1 – X4, type A ports, ch. B/pin 2)	101
11.7	LioN-P 60: UAux config. as a digital 2 A output (X5 - X8, type B ports, ch. B/pin 2)	101
11.8	LEDs	102
12	Accessories	103

1 About this manual

1.1 General information

Please read the assembly and operating instructions in this manual carefully before starting up the LioN-P modules with PROFINET IO interface. Keep the manual where it is accessible to all users.

The texts, figures, diagrams, and examples used in this manual are used exclusively to explain how to operate and apply the LioN-P modules with PROFINET IO interface.

Please contact us if you have any detailed questions on installing and starting up the devices. We will be happy to help you.

Belden Deutschland GmbH
– Lumberg Automation™ –
Im Gewerbepark 2
58579 Schalksmühle
Germany
Tel. +49 (0) 23 55 / 5044-0
Fax +49 (0) 23 55 / 5044-333
support-automation@belden.com
www.lumberg-automation.com

Belden Deutschland GmbH – Lumberg Automation™ – reserves the right to make technical changes or changes to this manual at any time without notice.

1.2 Explanation of symbols

1.2.1 Use of danger information

Danger information is denoted as follows:



DANGER

Means that death, serious physical injury or substantial damage to property will occur if the required safety measures are not taken.



WARNING

Means that death, serious physical injury or substantial damage to property can occur if the required safety measures are not taken.



CAUTION

Means that minor physical injury or damage to property can occur if the required safety measures are not taken.

1.2.2 Use of general information

General information is denoted as follows:



NOTE

Contains important information on the product, on how to manage the product, or on the respective section of the documentation to which your special attention is being drawn.

1.3 Version information

Index	Created	Changed	Changed
Version number	Version 1.0	Version 1.1	Version 2.0
Date	02-09-2016	06-14-2016	11-03-2016
Name/department	MJ / 02RH-NT	GL / 02RH-NT	MJ / 02RH-NT

Table 1: Overview of manual revisions

2 Safety instructions

2.1 Intended use

The devices described in this manual are decentralized input/output assemblies on a PROFINET IO network.

We adhere to all safety standards when developing, producing, testing, and documenting our products. When you adhere to the handling specifications and safety instructions described for the configuration, assembly, and correct operation, there should not normally be any risks for people or equipment.

The modules fulfill the requirements of the EMC guidelines (89/336/EEC, 93/68/EEC and 93/44/EEC) and the low voltage guideline (73/23/EEC).

The modules are designed to be used in the industrial sector. The industrial environment is distinguished by the fact that the consumer is not connected directly to the public low voltage network. Additional measures are required for use in residential areas or in business and commercial sectors.

i NOTE
This equipment may cause radio interference in residential areas. In this case the operator may be requested to carry out appropriate measures.

The proper and safe operation of this product depends on proper transportation, storage, assembly, and installation, and careful operation.

A completely assembled device housing is required for the proper operation of the modules. Only connect devices to the modules that fulfill the requirements of EN 61558-2-4 and EN 61558-2-6.

During the configuration, installation, start-up, maintenance, and testing of the devices, adhere to the safety and accident-prevention guidelines for the specific application.

Only install cables and accessories that fulfill the requirements and regulations for safety, electromagnetic compatibility, and, where applicable, telecommunication end devices, as well as the specification information. Information on which cables and accessories are permitted for the installation can be obtained from Lumberg Automation™ or is contained in this manual.

2.2 Qualified personnel

The configuration, installation, start-up, maintenance, and testing of the devices may only be performed by a qualified electrician who is familiar with the safety standards of the automation technology.

The personnel requirements are based on the requirement profiles described by ZVEI, VDMA, or equivalent organizations.

Only electricians who are familiar with the content of this manual are authorized to install and maintain the devices described. These are persons who

- ▶ based on their technical training, knowledge, and experience, and their knowledge of the pertinent standards, can evaluate the work to be carried out and identify any potential risks or
- ▶ based on working for several years in a related sector, have the same level of knowledge as they would have from the relevant technical training.

Only Belden Deutschland GmbH – Lumberg Automation™ – is permitted to make changes to the hardware or software of the products that go beyond the scope of this manual.



WARNING

Making unqualified changes to the hardware or software, or non-adherence to the warning information contained in this manual, can result in serious personal injury or damage to equipment.

3 Designations and synonyms

LioN-P 30	LioN-P devices with a width of 30mm
LioN-P 60	LioN-P devices with a width of 60mm
Type A	IO-Link port specification (Class A)
Type B	IO-Link port specification (Class B)
I/O port	X1 – X8
I/O port pin 4 (C/Q)	Channel A of X1 – X8
I/O port pin 2	Channel B of X1 – X8
U _{Aux}	U _{Auxiliary} 1)

1) U_{auxiliary} is the auxiliary power supply to the IO-Link type B ports X5 – X8 or the actuator power supply to the digital 2.0 A outputs on ports X5 – X8 (LioN-P 60).

4 System description

LioN modules (Lumberg input/output Network) function as the interface in an industrial fieldbus system: They enable a central controller on the management level to communicate with the decentralized sensors and actuators on the field level. The line or ring topologies that they can be used to create not only ensure reliable data communication but also significantly reduce the cables required and thus also the costs for installation and maintenance. They additionally enable easy, quick extension.

The modules of the LioN-P series have been substantially reduced in size compared with the well-known LioN-R family; the modules have a very rugged metal housing made of die-cast zinc. Housing variants with widths of 30mm and 60mm and different connector types are available. The completely cast device housing protects the module electronics from environmental effects and allows the device to be used in a wide temperature range. Despite the sturdy construction, the modules have compact dimensions and a low weight. They are especially suitable for use in machines and installations with a moderate I/O concentration over separate assemblies.

4.1 PROFINET product features

► Robust design:

The connection options provided by the module series are the widely-used M12 connector with D coding and the M12 hybrid connector for the PROFINET IO network.

The connectors are also color-coded to prevent the ports from being mixed up.

► Data transmission rates:

Featuring a transmission rate of up to 100MBit/s, the PROFINET IO modules can handle both fast transmission of I/O data and transmission of larger volumes of data.

► PROFINET IO Device RT:

The LioN-P IO-Link master modules support PROFINET IO Device RT (real-time). This allows the transmission of time sensitive process data between network components in real-time communication.

► PROFINET specification V2.3, Conformance Class C (CC-C):

The LioN-P IO-Link master modules comply with PROFINET specification V2.3 and meet the requirements of Conformance Class C (CC-C).

► Integrated switch:

The integrated Ethernet switch has two PROFINET ports and thus supports the establishment of a line or ring topology for the PROFINET IO network. The additionally implemented Media Redundancy Protocol (MRP) enables the design of a highly available network infrastructure.

► Fast Start-Up (FSU):

Fast Start-Up is an accelerated start-up process that enables LioN-P/-R modules to start communicating on an EtherNet/IP network after a very short time. This makes a faster tool change possible, for example. Thanks to the FSU feature, the modules are ready to operate in less than 1600 ms.

► Shared Device:

With the shared device functionality, two controllers can access the same IO device via a PROFINET interface. This option is done by copying the configuration of the IO device into the first and second controller and assigning it to the second controller as shared device. (Refer to the PLC manual)

► Support for protocols DCP, LLDP and SNMP:

The master modules use the DCP protocol to automatically assign IP addresses.

The LLDP protocol is used to detect devices in the vicinity (neighborhood detection).

The SNMP protocol handles network component monitoring and communication between the master and device.

► Alarm and diagnostics messages:

The modules support extended PROFINET alarm and diagnostics messages.

► I&M functions:

Identification and maintenance data (I&M) means information stored on the module. The identification data consist of manufacturer details for the module and can only be read. The maintenance data consist of system-specific details created during the course of configuration. The modules can be uniquely identified via the I&M data online.

The module-specific I&M functions I&M 0 - 4 for the network interface (Slot 0) and IO-Link master-specific I&M functions I&M 0 and I&M 99 (IO-Link master directory) for the IO-Link ports (Slot 1) are supported.

► GSDML-based configuration and parameterization of the I/O ports:

You have the option of configuring and parameterizing the I/O ports on the master modules via GSDML.

4.2 I/O port features

► The master modules support the IO-Link standard v1.1.

- Parametrization of the IO-Link devices in PROFINET via Siemens IO_LINK_CALL function modules for Step7 and TIA Portal.
- Parametrization of the IO-Link devices via Belden IO-Link Device Tool. Usable as standalone PC-Application or callable via Siemens TIA Portal.

► 8 x IO-Link master ports:

The modules have 4 type A ports with an additional hard-wired digital input on pin 2 of the I/O port.

– Variants with a width of 30mm:

4 x type B ports with electrically isolated auxiliary power supply on pins 2 and 5 of the I/O port with a total of 4A current.

– Variants with a width of 60mm:

4 x type B ports with electrically isolated auxiliary power supply for up to 2 A per port on pins 2 and 5 with a total of 8A current.

The auxiliary power supply can optionally be configured as a digital output.

► IO-Link port connections:

The IO-Link port connection option provided by the module series is the 5-pin M12 connector, or the 5-pin M8 connector.

► Parameter storage:

The parameter storage function stores and monitors the parameters of the IO-Link device and IO-Link master. The function thus gives you an easy option for replacing the IO-Link device or IO-Link master.

This is possible as of IO-Link specification V1.1 and only if the IO-Link device and the IO-Link master support the function.

► IO device parameterization:

The IO-Link devices in PROFINET can be parameterized via the Siemens function module `IO_LINK_CALL` for **STEP 7** and the **TIA Portal**.

► LED:

You can see the status of a port by the color of the matching LEDs and their flash pattern. For details on the meanings of the LED colors, please see section [“LEDs” on page 102](#).

4.3 Integrated web server

► Network parameter display:

The integrated web server gives you the option of viewing network parameters such as the IP address, subnet mask and gateway.

► Displaying diagnoses:

You can view the diagnoses via the integrated web server.

► User management:

You can use the integrated web server for convenient management of all users.

► IO-Link device parameters:

You can read the IO-Link device parameters via the integrated web server and write new parameters in single write mode to the modules. Single write mode doesn't activate the automated parameter storage mechanism.

► Force Mode (Web Interface):

With the force mode output and input values can be set for implementation reasons.

4.4 Other features

► Interface protection:

The modules have reverse polarity, short-circuit and overload protection for all interfaces.

► Failsafe:

The modules support a failsafe function. This allows you to define the behavior of every single channel configured as an output in the case of an interruption or a loss of PROFINET communication.

► Color-coded connectors:

Color-coded connectors help you avoid confusion in your cabling.

► IP protection classes IP65/IP67/IP69k:

The IP protection classes describe environmental influences that the modules can be exposed to without risk and without suffering damage, or causing a risk for the user.

Depending on the module, IP protection classes IP65, IP67 or IP69k are offered.

4.5 Product overview

The following IO-Link masters are available for the LioN-P system:

Article number	Product designation	Description	Power & Ethernet ports	I/O ports
934 878 005	0980 ESL 308-121	LioN-P M12-60, L-coded, IO-Link PROFINET	PWR - M12 L-coded ETH - M12 D-coded	8 x M12 (Up to 4DO 2A)
934 878 004	0980 ESL 309-121	LioN-P M12-60, L-coded, IO-Link PROFINET	PWR - M12 L-coded ETH - M12 D-coded	8 x M12 (Up to 8DO 0,5 A and up to 4DO 2A)
934 861 001	0980 ESL 109-121	LioN-P M12-30, L-coded, IO-Link PROFINET	PWR - M12 L-coded ETH - M12 D-coded	8 x M12
934 840 001	0980 ESL 109-332	LioN-P M8-30, Hybrid, IO-Link PROFINET	PWR - M12 Hybrid ETH - M12 Hybrid	8 x M8
934 862 001	0980 ESL 109-331	LioN-P M12-30, Hybrid, IO-Link PROFINET	PWR - M12 Hybrid ETH - M12 Hybrid	8 x M12
934 857 001	0980 ESL 109-122	LioN-P M8-30, L-coded, IO-Link PROFINET	PWR - M12 L-coded ETH - M12 D-coded	8 x M8

Table 2: Overview of module variants in the LioN-P series

5 Assembly and wiring

5.1 General information

Mount the module on a flat surface using 2 screws (M4x 25/30). The torque required here is 1 Nm. Use washers for all fastening methods as per DIN 125.

i Note

The modules have a ground connection with an M4 thread for the conduction of interference currents and the EMC immunity. This is labeled with the symbol for the ground and the designation "XE"
--

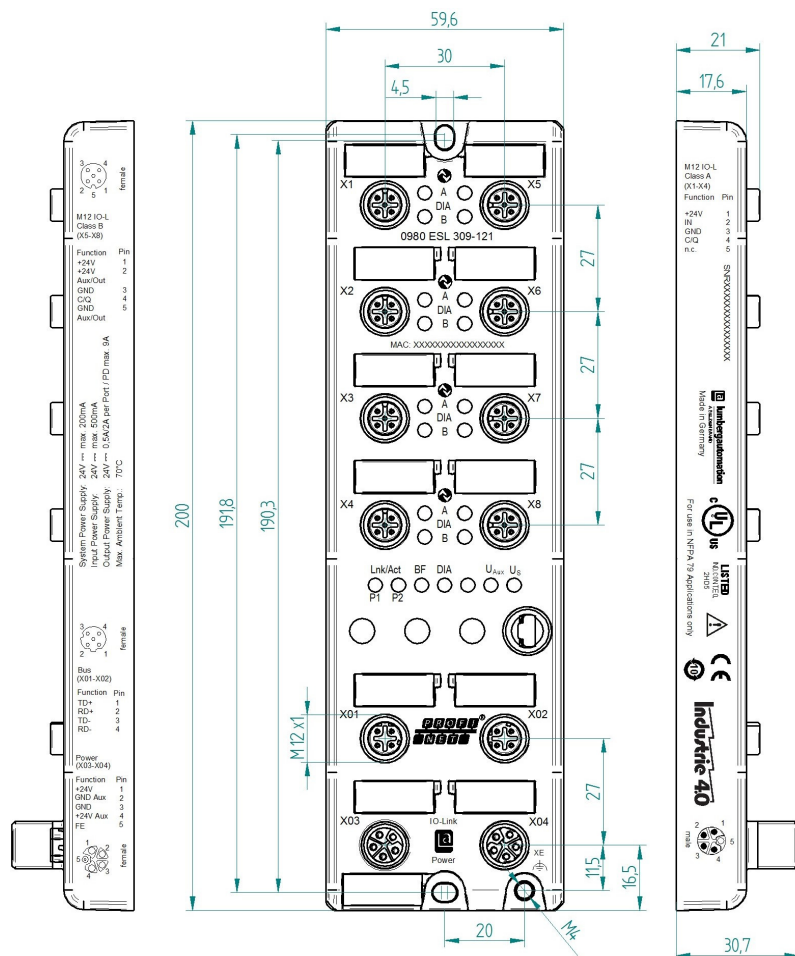
i Note

Use a low-impedance connection to connect the module to the reference ground. When using a grounded mounting surface, you can make the connection directly via the fixing screws.

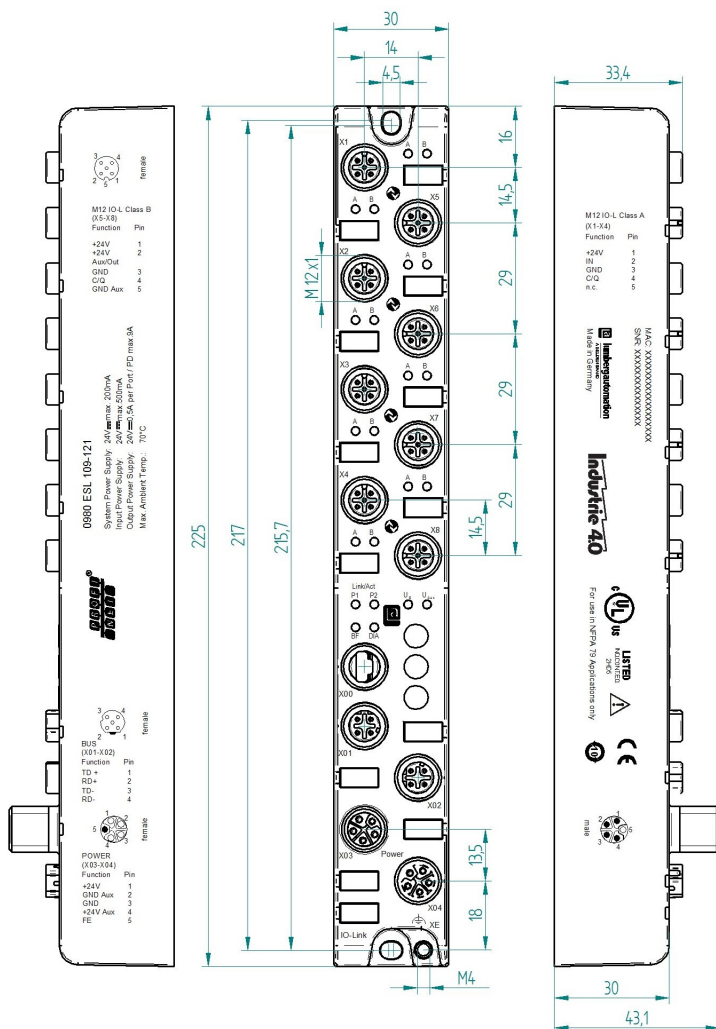
i Note

If the mounting surface is ground-free, use a ground strap or a suitable PE line. Use an M4 screw to connect the ground strap or the PE line to the ground point and if possible put a washer and a toothed washer below the fixing screw.
--

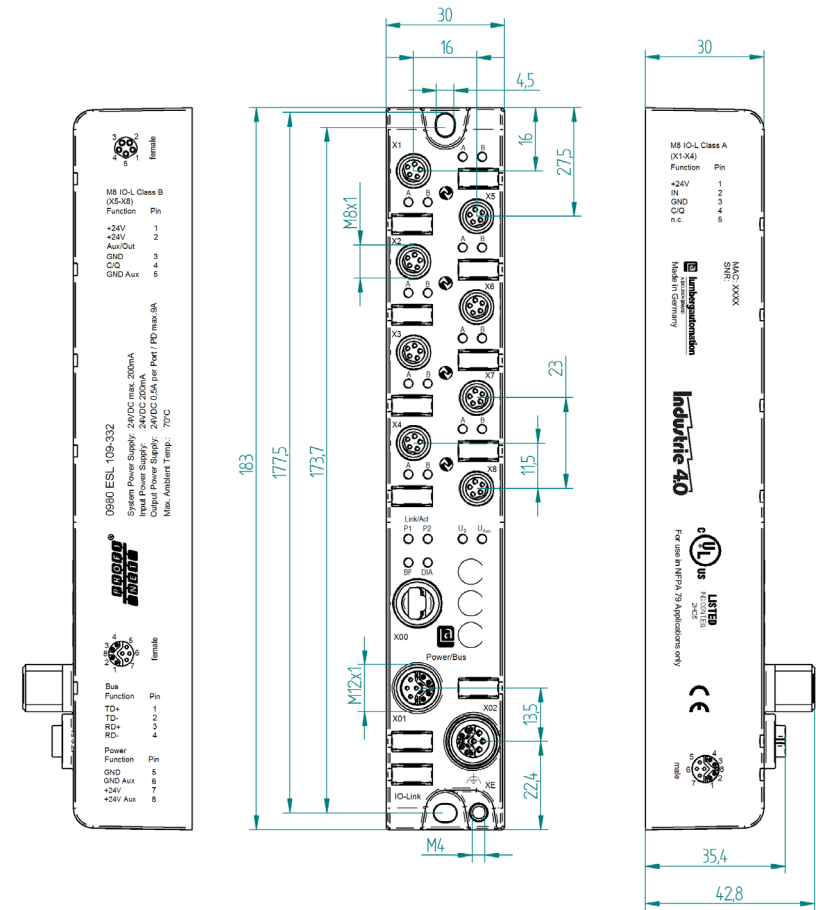
5.2.1 Module 0980 ESL 308-121 & ESL 309-121



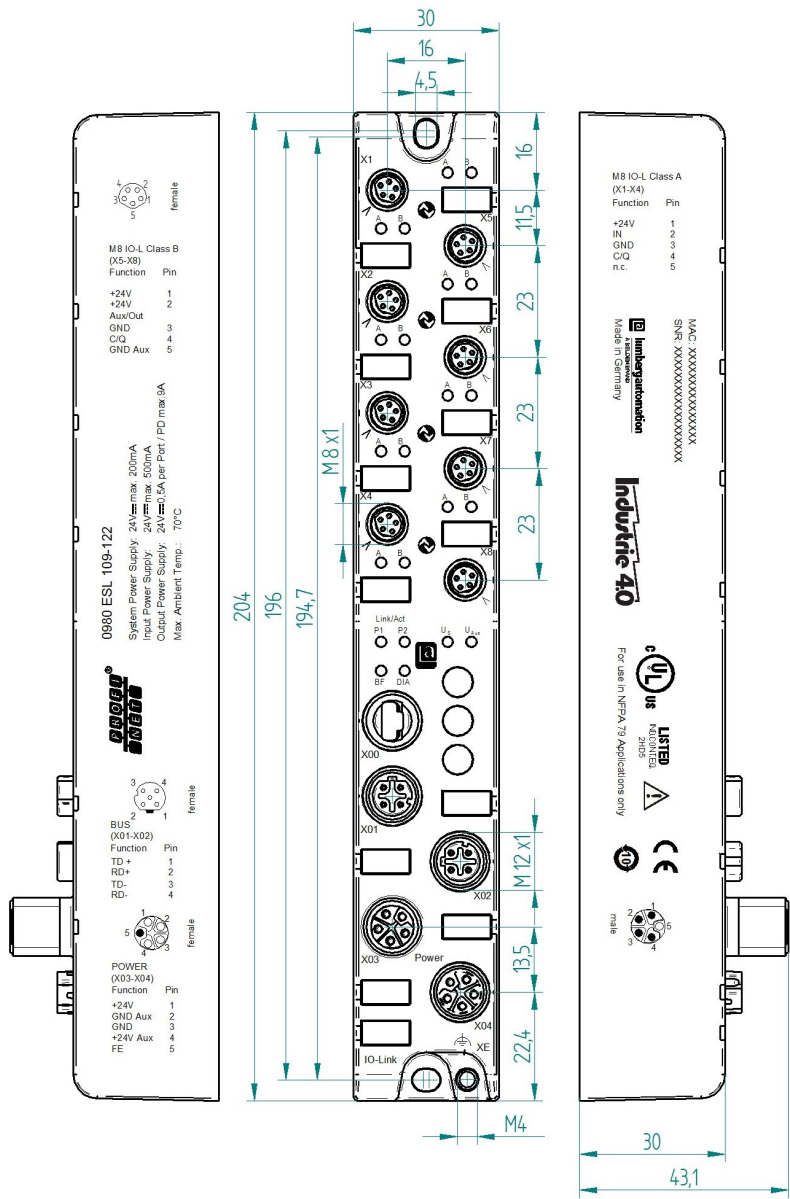
5.2.2 Module 0980 ESL 109-121



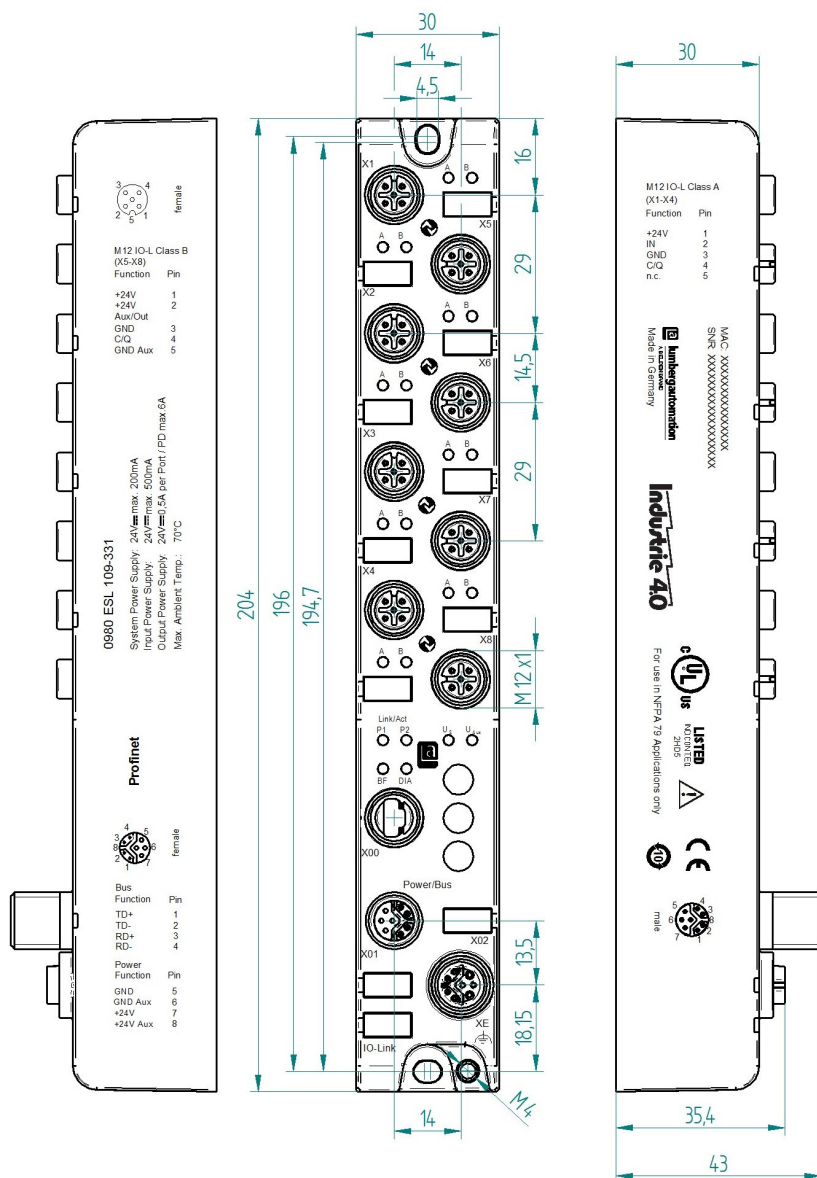
5.2.3 Module 0980 ESL 109-332



5.2.4 Module 0980 ESL 109-122



5.2.5 Module 0980 ESL 109-331



i Note

For UL application:

Be sure to use a UL-certified cable with a suitable evaluation to connect the devices (CYJV or PVVA). To program the control, please refer to the OEM information, and only use suitable accessories.

i Note

For UL application:

Only approved for interior use. Please note the maximum elevation of 2000 meters. Approved up to a maximum soiling level of 2.

**WARNING**

Terminals, housings field-wired terminal boxes or components can exceed temperatures of 60 °C.

**WARNING**

For UL application (max. ambient Temperature +70 °C):

Use temperature-resistant cables with the following properties:

For the modules 0980 ESL1x9-1xx heat-resistant up to at least 85 °C.

For the modules 0980 ESL1x9-33x heat-resistant up to at least 104 °C.

For the modules 0980 ESL3x9-xxx heat-resistant up to at least 96 °C.

For the modules 0980 ESL3x8-xxx heat-resistant up to at least 101 °C.

5.3 Port assignments

All the contact arrangements shown in this chapter show the frontal view of the connection area for the connectors.

5.3.1 PROFINET ports, M12 socket, 4-pin, D-coded

► Color coding: green

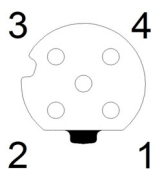


Figure 1: Schematic drawing, ports X01, X02

Port	Pin	Signal	Function
PROFINET Ports X01, X02	1	TD+	Transmit data plus
	2	RD+	Receive data plus
	3	TD-	Transmit data minus
	4	RD-	Receive data minus

Table 3: Assignment of ports X01, X02



CAUTION

Risk of destruction! Never connect the power supply to the data cables.

5.3.2 Power supply with M12 power L-coded

► Color coding: gray

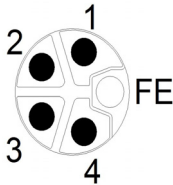


Figure 2: Schematic diagram of the M12 L-coding (connector), port X03 (IN)

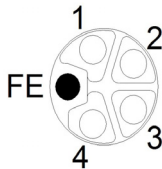


Figure 3: Schematic diagram of the M12 L-coding (socket), port X04 (OUT)

Power supply	Pin	Signal	Function
	1	U_s (+24V)	Sensor/system power supply
	2	$GND_{-U_{Aux}}$	Ground/reference potential U_{aux}
	3	GND_{-U_s}	Ground/reference potential U_s
	4	U_{Aux} (+24V)	Auxiliary supply (electrically isolated)
	5	FE (PE)	Functional ground

Table 4: Power supply with M12--Power

i NOTE

Only use power supply units for the system/sensor and actuator supply that correspond to PELV (Protective Extra Low Voltage) or SELV (Safety Extra Low Voltage). Power supplies according to EN 61558-2-6 (transformers) or EN 60950-1 (switching power supply units) fulfill these requirements.

5.3.3 PROFINET and power supply with M12 Hybrid

► Color coding: gray

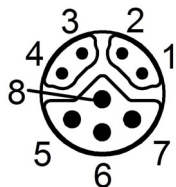


Figure 4: Schematic diagram of the M12 Hybrid (connector)

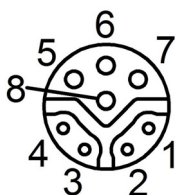


Figure 5: Schematic diagram of the M12 Hybrid (socket)

Ether + Power Supply	Pin	Signal	Function
	1	TD +	Transmit data plus
	2	TD -	Transmit data minus
	3	RD +	Receive data plus
	4	RD -	Receive data minus
	5	GND_ U_S	Ground/reference potential U_S
	6	GND_ U_{Aux}	Ground/reference potential U_{aux}
	7	$U_S(+24V)$	Sensor/system power supply
	8	$U_{Aux} (+24V)$	Auxiliary supply (electrically isolated)

Table 5: PROFINET and power supply with M12 Hybrid

i NOTE

Only use power supply units for the system/sensor and actuator supply that correspond to PELV (Protective Extra Low Voltage) or SELV (Safety Extra Low Voltage). Power supplies according to EN 61558-2-6 (transformers) or EN 60950-1 (switching power supply units) fulfill these requirements.

5.3.4 I/O ports as M8 or M12 sockets

■ IO-Link Type A

► Color coding: black

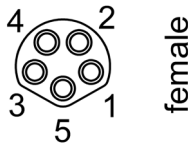


Figure 6: Schematic drawing I/O port as M8 socket IO-Link type A

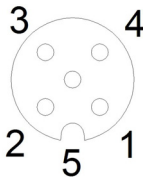


Figure 7: Schematic drawing I/O port as M12 socket IO-Link type A

IO-Link Type A	Pin	Signal	Function
	1	L+	IO-Link sensor power supply +24V
	2	IN-x	Ch. B: Digital input (type 1)
	3	L-	IO-Link sensor supply GND = U _S
	4	C/Q	Ch. A: IO-Link data communication
	5	NC	not connected

Table 6: I/O ports as M8 or M12 socket IO-Link type A

IO-Link Type B
▶ Color coding: black

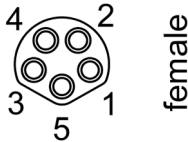


Figure 8: Schematic drawing I/O port as M8 socket IO-Link type B

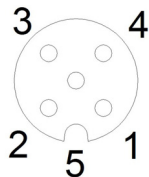


Figure 9: Schematic drawing I/O port as M12 socket IO-Link type B

IO-Link Type B	Pin	Signal	Function
	1	L+	IO-Link sensor power supply +24V
	2	U _{Aux} (+24V)	Ch. B: Auxiliary power supply (electrically isolated with respect to the sensor/system power supply)
	3	L-	IO-Link sensor supply GND_U _S
	4	C/Q	Ch. A: IO-Link data communication
	5	GND_U _{Aux}	Ground/reference potential U _{Aux}

Table 7: I/O ports as M8 or M12 socket IO-Link type B

**WARNING**

I/O port – Sensor supply:

The sensor supply may only be carried out via the specified power connection (Power X03 --> $U_S +24V/GND_U_S$) of the module. An external power supply over the I/O port (Port X1–X8 --> Pin1/Pin3) is not permitted and can lead to a destruction of the module electronics!

**WARNING**

I/O port connection (IO-Link – Class B):

The sensor supply (Port X5–X8 --> Pin1/Pin3) and the extended sensor supply (Port X5–X8 --> Pin2/Pin5) are galvanic isolated from each other. If the reference potentials ($GND_U_S - Pin3$) and ($GND_UAux - Pin5$) are connected, unacceptable compensation currents can flow. In this case the connection of a sensor at (Port X5–X8 --> Pin2) is not allowed!

The removal of the galvanic separation is not recommended.

6 Starting operation

6.1 GSDML file

A GSD file in XML format is required to configure the LioN-P modules. All module variants are grouped in a single GSDML file. This can be downloaded from our homepage:

http://www.beldensolutions.com/en/Service/download_center/index.phtml

On request, the GSDML file is also sent by the support team.

The GSDML file and the associated bitmap files are grouped in the archive file named **GSDML-V2.3x-LumbergAutomation-LioN-P-yyyymmdd.xml**.

yyyymmdd stands for the date on which the file was issued.

Download this file and unpack it.

In **Step7** you create a new project and open the hardware manager "HW-Config". The GST file is installed using the menu command `Options > Install station description files (GSDML)...` and the subsequent dialog.

The LioN-P/-R I/O modules with PROFINET interface are then available in the hardware catalog.

The GSDML file contains all PROFINET device variants for the LioN-P family of devices, including devices not described in this manual.

6.2 Reading the MAC addresses

Every module has three unique MAC addresses assigned by the manufacturer that cannot be changed by the user. The first assigned MAC address is printed on the module.

6.3 State on delivery

PROFINET parameters in state on delivery or after a factory reset:

PROFINET name:	Name not assigned
IP address:	0.0.0.0
Subnet mask:	0.0.0.0
Device designations:	0980 ESL 109-121 0980 ESL 109-122 0980 ESL 109-331 0980 ESL 109-332 0980 ESL 308-121 0980 ESL 309-121
Vendor ID:	0x016a
Device ID:	0x0305

6.4 Configuration of the LioN-P PROFINET I/O modules in STEP 7

After installing the GSDML files for the LioN-P PROFINET modules, they are available in the hardware catalog on `PROFINET IO > Other field devices > I/O > Lumberg LioN-P`.

First, configure the control system in the usual way. Assign an IP address and subnet mask for the PROFINET port of the control unit.

Then click on the article designations of the modules in the hardware catalog and move the desired module to the PROFINET line of the control unit.

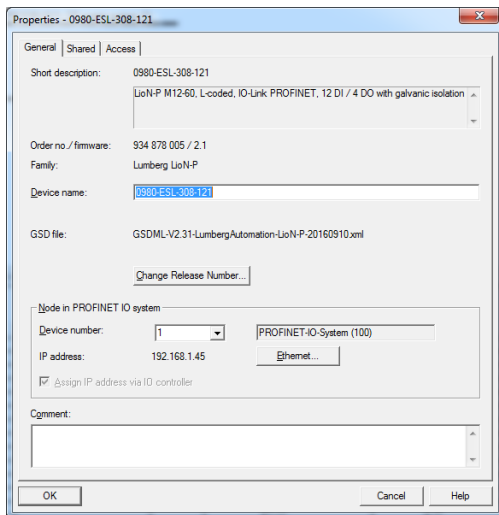
6.4.1 Assigning a unique device name

PROFINET I/O devices are addressed on PROFINET via a unique device name. This can be freely assigned by the user, but may only be used once on the network.

Select the module in "HW-Config" and open the menu `Edit > Object properties`. In the dialog box that opens, you can then change the device name.

Check whether the IP address displayed is correct, and the control unit and module are on the same Ethernet subsystem.

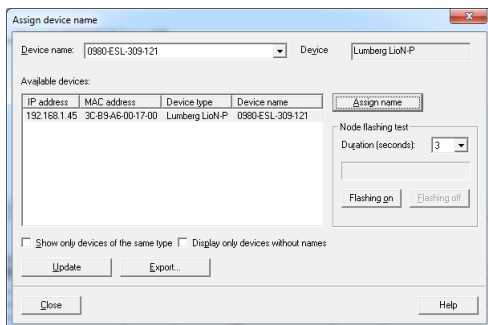
Confirm the entries by pressing "OK".



6.4.2 Assigning a device name to a Lion-P module

An online PROFINET connection between the programming device and the module is required to assign the device name to a module.

Select the Lion-P module and open the `Target device > Ethernet > assign name` dialog.



6.4.3 Configuring the IO-Link channels

A pre-configuration of the I/O function is automatically used for slot 1 of the subrack. By default, all channels are pre-configured as **digital inputs** as per the IO-Link specification.

The configurations of the IO-Link channels (C/Q or ch. A of the IO-port/pin 4 of the IO-port) in the sub-slots 2 - 9 (port 1 of the device is equivalent to sub-slot 2, ..., port 8 of the device is equivalent to sub-slot 9) are flexibly definable.

The input and output addresses defined by the Hardware Manager can be changed.

The following illustration shows the device pre-configuration using the 0980 ESL 109-121 module as an example:

Slot	Module	Order number	I Address	Q Address	Diagnostic	C	Access
0: PROFINET IO interface	0980 ESL 109-121	824 678 004			0180*	Full	
1: I/O System	0980 ESL 109-121				0180*	Full	
1.1: I/O Link Master	0980 ESL 109-121				0180*	Full	
1.1.1: Status Control Module	0980 ESL 109-121				0180*	Full	
1.2: Port X1	Digital In (A/Dig. In)			0180*	Full		
1.3: Port X2	Digital In (A/Dig. In)			0180*	Full		
1.4: Port X3	Digital In (A/Dig. In)			0180*	Full		
1.5: Port X4	Digital In (A/Dig. In)			0180*	Full		
1.6: Port X5	Digital In (A/Dig. In)			0180*	Full		
1.7: Port X6	Digital In (A/Dig. In)			0180*	Full		
1.8: Port X7	Digital In (A/Dig. In)			0180*	Full		
1.9: Port X8	Digital In (A/Dig. In)			0180*	Full		

■ Deleting the configuration of an IO-Link channel

To delete an IO-Link channel, select the desired IO-Link channel in "HW-Config".

Right click and then select the "Clear" option in the menu that appears.

- ☐ First select the channel you want to delete:

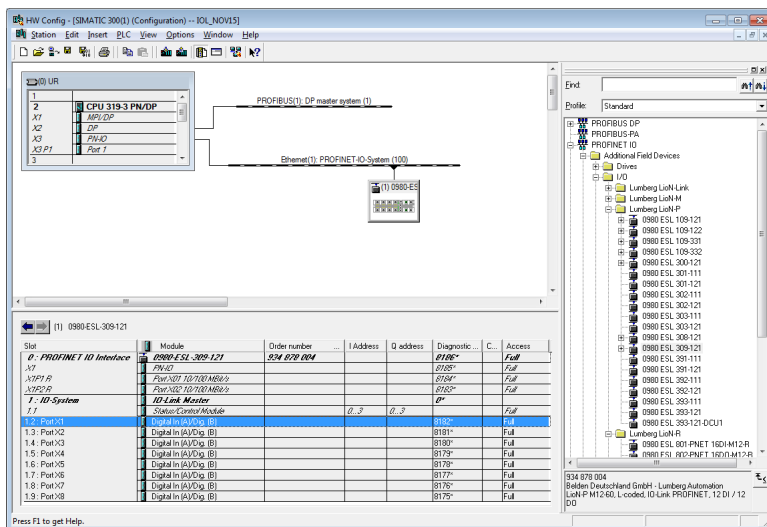


Figure 10: Free IO-Link channel

- ☐ Then right click this entry. The following menu appears:

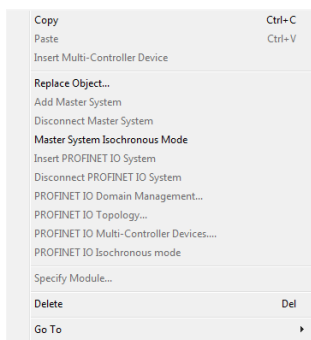


Figure 11: Menu dialog

- ☐ Select the "Clear" option. Press "Yes" to confirm the dialog that

follows.

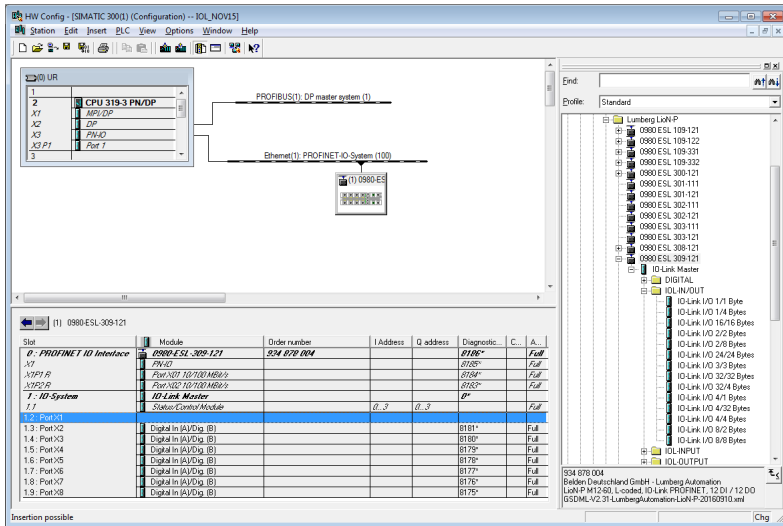


Figure 12: Free IO-Link channel

■ Creating an IO-Link channel configuration

Click 3x on the + symbols in the hardware catalog of the device you want to configure to reveal a selection of options:

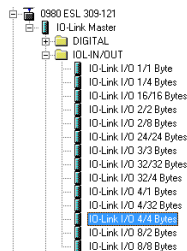


Figure 13: IO-Link channel configuration

Select the desired option, click and hold down the left mouse button to drag the configuration to a free IO-Link sub-slot.

The following options are available for the IO-Link C/Q channel (ch. A/pin 4):

► Digital Input:

In this mode, the channel operates as a digital input. In this mode, the IO-Link master does not try to independently establish communication to the connected IO-Link device.

However, the cyclical output bits in the COM-mode byte of the IO-Link master status/control modules can be used to set the appropriate channel bits of the COM mode, and thus enable the IO-Link device for parameterization.

i NOTE

During optional COM operations, the status of the digital input signal is not updated.

► Digital Output:

In this mode, the channel operates as a digital output. It is impossible at any time to communicate with the connected device.

The “Digital Output” option for IO-Link C/Q channel (ch. A/pin4) is not available for the 0980 ESL 308-121 device.

► Inactive:

This mode should be selected if the channel is not used. The L+ power supply (pin 1) of the port is disabled in this case.

► IO-Link in SIO mode (DI):

This mode is used to parameterize the IO-Link devices. It relies on the fallback mechanism from COM mode to SIO mode, without using the COM mode bits in the IO-Link master's status/control module. In this mode, the IO-Link device is parameterized at module startup time, and then changes back to digital input mode via the fallback mechanism.

► IO-Link ...:

In this mode (COM mode), the process data from or to the device are exchanged over a communication link. The IO-Link master automatically starts communicating with the connected IO-Link device, taking into account the baud rate. Additionally, this mode offers the option of parameterizing the IO-Link device.

Configuration modules with data lengths of 1-32 input and/or output bytes are available.

If no suitable configuration module is available for the device, the next larger data length must be selected.

6.4.4 Parameterization of the IO-Link channels

Double-clicking on the corresponding IO-Link sub-slot in the hardware configuration and selecting the "Parameter" tab, lets you set the following parameters:

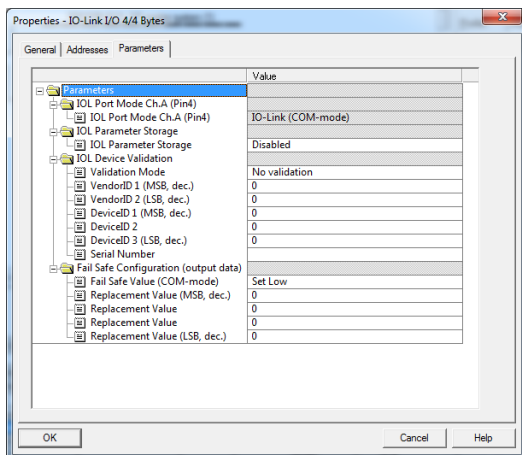


Figure 14: Parameter of the IO-Link channels

■ IOL Parameter storage

The parameter server of the IO-Link master can be parameterized in the "Parameter storage" tab. The "Parameter storage" function manages the IO-Link device parameters to enable a simple device or master replacement.

The following options can be set:

► Disabled:

Disabled mode is the default setting in as-delivered condition. The data maintenance function is disabled. If parameter data of a device were stored previously, these data remain stored without any changes.

► Download only (master to device):

Enables the parameter data download function to the IO-Link device on the master.

Parameter data can only be uploaded to an IO-Link device if they exist on the parameter server and are usable for the device. When an IO-Link device is connected, the master compares the stored parameter data with the device data. If the function is not locked on the device ("Parameter storage" locked), the master downloads the stored data to the device in case of differences.

IO-Link device data can be loaded using the "Upload only" mode. If the master does not have a device parameter set stored, the mode must be compared with "Disabled".

Replacement of the IO-Link device is possible in this mode.

► Upload only (device to master):

Enables the parameter data upload function to the IO-Link master from the device.

An upload is performed when an IO-Link device is connected and the master does not have any valid data. This is the case if "Disabled and Cleared" mode was configured previously and/or in case of "Disabled" in as-delivered condition.

If parameter data are changed on the device during runtime, the device data stored on the master can be overwritten using the ParamDownloadStore (Index 0x0002, Subindex 0x00, Value 0x05) command. This command sets the DS_UPLOAD_REQ flag on the device, and thus executes an upload.

The IO-Link master can be replaced in this mode.

► Download and Upload:

Enables the IO-Link parameter data download and upload function.

An upload is performed when an IO-Link device is connected and the master does not have any valid data. This is the case if "Disabled and Cleared" mode was configured previously and/or in case of "Disabled" in as-delivered condition. The parameter data read are permanently stored on the master.

If parameter data are changed on the device during runtime, the device data stored on the master can be overwritten using the ParamDownloadStore (Index 0x0002, Subindex 0x00, Value 0x05) command. This command sets the DS_UPLOAD_REQ flag on the device, and thus executes an upload.

For each new connection to an IO-Link device, the master compares the stored parameter data with the device data. If the function is not locked on the device ("Parameter storage" locked), the master downloads the stored data to the device in case of differences.

The IO-Link device can be replaced in this mode.

Action	IO-Link master state	IO-Link device state
Upload	Invalid Data (Cleared before)	Upload Flag active (Valid Data)
Upload	Invalid Data (Cleared before)	Upload Flag not active & Valid Data
Upload	Valid Data	Upload Flag active & Valid Data
Download	Valid Data	Upload Flag not active (Data Equal)

► Disabled and Cleared:

The data retention function is disabled; and stored data are deleted.

***i* NOTE**

An IO-Link device sets the "Upload Flag" self-dependent, if parameter were written in block mode to the IO-Link device.

■ IOL Device Validation

The IO-Link device validation (IO-Link device identification) lets you check the connected devices for the values set in the control program in order to, e.g., identify correctly connected devices and not start operations with them.

► Validation Mode

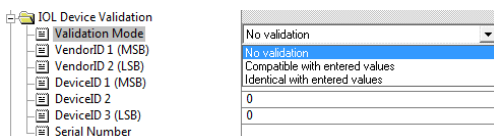


Figure 15: IO-Link device identification

– No validation:

This option is the default setting. In this case, neither the VendorID, DeviceID, nor the serial number are synchronized after powering on between the IO-Link device and the entered IO-Link master data before communication starts.

– Compatible with entered values:

With this option, the VendorID and DeviceID are synchronized after powering on between the IO-Link device and the entered IO-Link master data before communication starts. Process data communication is only established if the configured values match the values reported by the device.

Replacement of the an IO-Link device of the same type is thus possible without changes in the Engineering Tool.

– Identical with entered values:

In this case, the VendorID, DeviceID and serial number are synchronized after powering on between the IO-Link device and the entered IO-Link master data before communication starts. Process data communication is only established if the configured values match the values reported by the device.

Replacement of the an IO-Link device of the same type is thus only possible if the serial number is changed in the Engineering Tool at

the same time.

► VendorID:

The VendorID of the IO-Link device used can be entered as a decimal value in the "VendorID 1" (high-order byte) and "VendorID 2" (low-order byte) fields.

► DeviceID:

The DeviceID of the IO-Link device used can be entered as a decimal value in the "DeviceID 1" (high-order byte) and "DeviceID 3" (low-order byte) fields.

► Serial Number:

The serial number of the IO-Link device can be entered as a string in the "Serial Number" input field. The input is limited to 16 characters.

■ Fail Safe Configuration (for outputs only)

This option is only applicable for IO-Link channels in COM mode where output data are used. In COM mode, the IO data are exchanged between the IO-Link master and IO-Link device via serial communication.

► Fail Safe Value (COM-mode)

The following values are selectable:

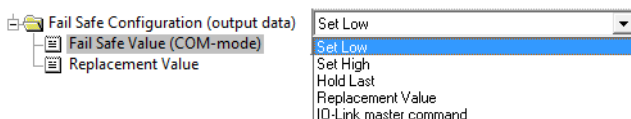


Figure 16: Fail Safe Configuration

- Set Low:
All bits of the output data with a value of 0 are transmitted to the IO-Link device. (Default setting)
- Set High:
All bits of the output data with a value of 1 are transmitted to the IO-Link device.
- Hold Last:
The last valid output value received by the control unit is continuously and cyclically transmitted to the IO-Link device.

- Replacement Value:

If this option is selected, the value entered in the "Replacement Value" input field described below is continuously and cyclically transmitted to the IO-Link device.

- IO-Link master command:

The "IO-Link-Master-Command" option allows the use of IO-Link-specific mechanisms for valid/invalid output process data. Thus, the device itself determines the behavior.

► Replacement Value:

Fail Safe Configuration (output data)	
Fail Safe Value (COM-mode)	Replacement Value
Replacement Value MSB	0
Replacement Value	0
Replacement Value	0
Replacement Value LSB	0

Figure 17: Fail Safe Value

If "Fail Safe Value" the option "Replacement Value" was set below the parameter option, then the substitute value entered in this input field/these input fields is used.

The value must be entered as a decimal value. Depending on the configured data length, the values must be entered as bytes (0-255) or word decimal values (0-65535) in the order shown.

- MSB = high order byte
- LSB = low order byte
- MSW = high order word
- LSW = low order word

6.4.5 Parameterization of the status/control module

Slot	Module	Order number	...	I Address	Q address	Diagnostic ...	C...	Access
0 : PROFINET IO Interface	0980-ESL-309-121	934 878 004				8186*		Full
X1	FN-IO					8185*		Full
X1P1 B	Port X01 10/100 Mbit/s					8184*		Full
X1P2 B	Port X02 10/100 Mbit/s					8183*		Full
1 : IO-System	IO-Link Master					0*		
1.1	Status/Control Module			Q...3	Q...3			Full

Figure 18: Status/Control module

The status/control module in slot 1/sub-slot 1 is pre-configured for each Lion-P IO-Link master. It consists of 4 bytes of input and 4 bytes of output data for the digital IO/ data, and status and control bits of the IO-Link master. The bit assignments are described in section [“Bit assignment” on page 69](#).

The Status/Control module can also be used to perform all parameterizations that do not affect ports in IO-Link COM mode.

The following parameterizations are possible after double clicking "Status/Control Module" in the "Parameter" tab:

■ General Device Settings

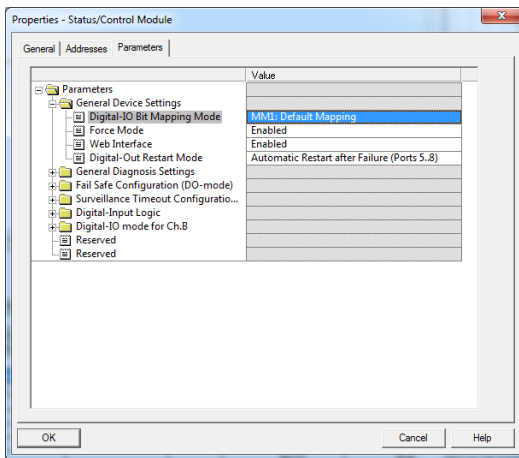


Figure 19: General device settings

The "Digital-IO Bit Mapping Mode" parameter can be used to define the mappings of the input/output bits that are transmitted in the cyclical data of the Status/Control Module from the control unit to the devices, or from the device to the control unit.

► Default setting:

MM1: Default Mapping

► MM1: Default Mapping:

In Mapping Mode 1 (MM1), the first channel bit (C/Q, Ch. A / Pin 4) and the second channel bit (Ch. B / Pin2) are transmitted alternately in ascending order for all ports.

► MM2: E2C Compatible Mapping:

In Mapping Mode 2 (MM2), the first channel bits (C/Q, Ch. A / Pin 4) and the second channel bits (Ch. B / Pin2) are transmitted consecutively in ascending order for all ports.

The different formats are also shown in section [“Bit assignment” on page 69](#).

■ General Diagnosis Settings

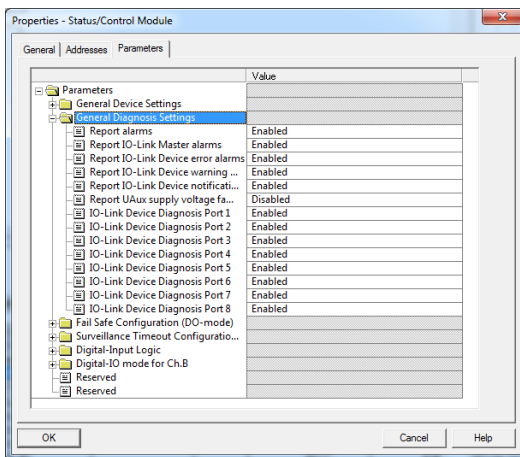


Figure 20: General diagnosis settings

Diagnostics or diagnostics levels can be enabled or disabled in the General Diagnosis Settings folder.

The figure shows the default setting.

i NOTE

Report UAux supply voltage fault is disabled in the default setting, to avoid diagnostic messages due to switching the supply voltage on or off later on.

■ Fail Safe Value (DO-Mode)

The device supports a failsafe function for the channels used as digital outputs. During configuration of the devices, the status of the outputs can be defined after an interruption, or loss of communication on the PROFINET IO network.

The following options can be selected:

- ▶ Set Low - the output channel is disabled and/or the output bit set to 0.
- ▶ Set Low - the output channel is enabled and/or the output bit set to 1.
- ▶ Hold last - the last output state is kept.

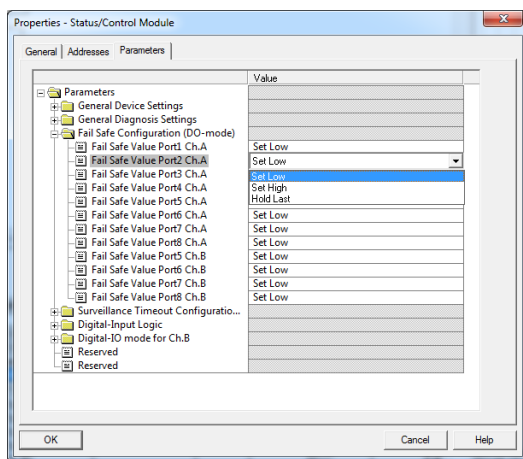


Figure 21: Fail safe value

6.4.6 Surveillance Timeout Configuration (LioN-P 60 devices)

For LioN-P 60 devices, the separate power supply U_{Aux} , which is available on type B IO-Link channels (Ch.B / Pin2), ports 5-8, can also be configured as an additional digital output (tab: "Digital-IO mode for Ch. B (Pin2)". This gives you the option of switching the power supply like a digital output.

The firmware of the modules allows you to configure a delay time before output current monitoring is enabled for this special use case.

The delay time is referred to as the "Surveillance-Timeout" and can be configured for each output channel. The delay time begins after the state of the output channel changes, i.e., when it is activated (after a rising edge) or deactivated (after a falling edge). After this time has elapsed, the output is monitored, and error states are reported by diagnostics.

The "Surveillance-Timeout" parameter can be set from 0 to 255 ms. The default value for this parameter is 80 ms. When an output channel is in static state, i.e., when the channel is permanently switched on or off, the typical value is 5 ms.

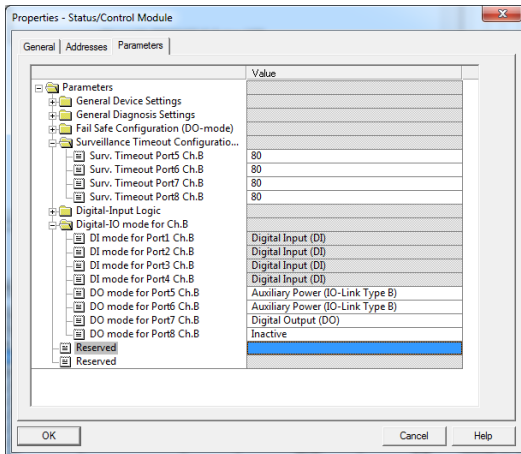


Figure 22: Surveillance Timeout Configuration

6.4.7 Digital input logic

This parameter can be used to configure the logic of channels used as digital inputs.

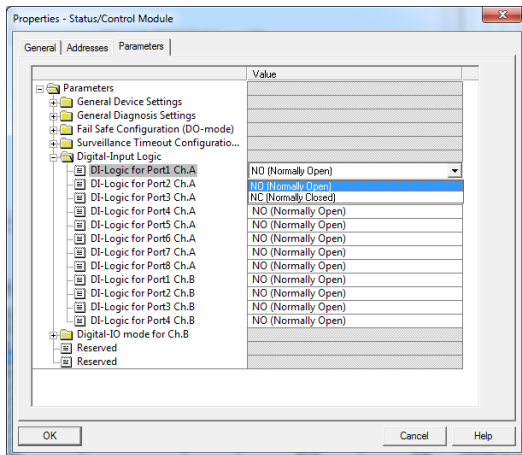


Figure 23: Digital input logic

► Default setting:

NO (Normally Open) for all channels

► NO (Normally Open):

A non-damped sensor has an open switching output (low signal) in this case. The device input detects a low signal and returns a 0 to the control unit.

► NC (Normally Closed):

A non-damped sensor has a closed switching output (high signal) in this case. The device input detects a high signal, inverts the signal, and returns a 0 to the control unit.

6.4.8 Digital-I/O mode for Ch. B/Pin 2

■ Digital-I/O mode for Ch. B/Pin 2 (LioN-P 30 devices)

The type B IO-Link ports of the LioN-P 30 devices have a fixed configuration. The functionality is shown in the following figure:

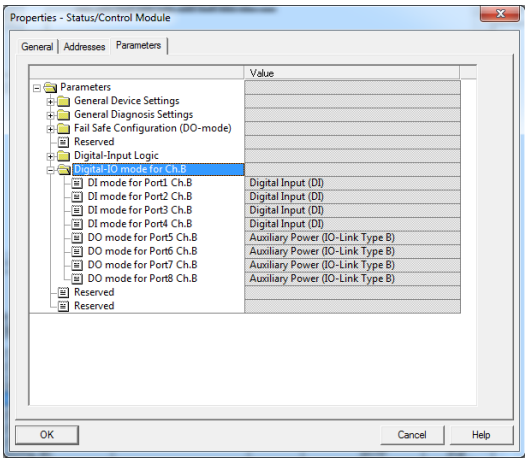


Figure 24: Digital I/O mode (LioN-P 30 devices)

■ Digital-I/O mode for Ch. B/Pin 2 (LioN-P 60 devices)

The type B IO-Link ports, ports 5- 8 on the LioN-P 60 devices, can be parameterized as follows:

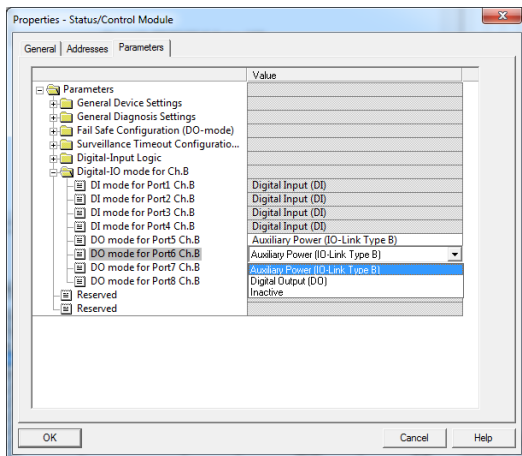


Figure 25: Digital I/O mode (LioN-P 60 devices)

► Default setting:

Auxiliary Power Supply (IO-Link Type B)

► Auxiliary Power (IO-Link Type B):

In this mode, Pin 2 and Pin 5 of the type B IO-Link ports, ports 5 - 8, act as an auxiliary voltage output. The auxiliary voltage is fed from the U_{Aux} supply input. The auxiliary voltage output cannot be controlled.

► Digital Output (DO):

In this mode, Ch. B/Pin 2 of the type B IO-Link ports, ports 5 - 8, can be used as a digital output. The control bits are transferred by the control unit to the device within the status/control module. A "Surveillance-Timeout" can be parameterized for the outputs (tab "Surveillance Timeout Configuration").

6.5 IO-Link device parameterization

6.5.1 SIEMENS IO-Link library

The SIEMENS **STEP 7** "IO_LINK_CALL" function module can both acyclically write device parameters of an IO-Link device and read parameters, measured values and diagnostic data. In a revised version of this library, "IO_LINK_CALL" has been replaced by the "IO_LINK_DEVICE" module for acyclic communication with IO-Link devices.

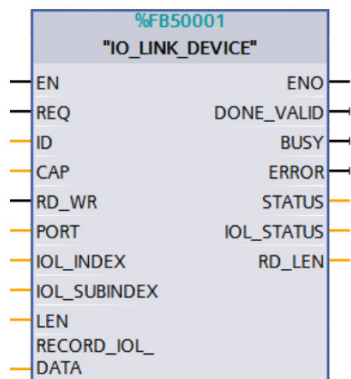


Figure 26: STEP 7 V13 SP1

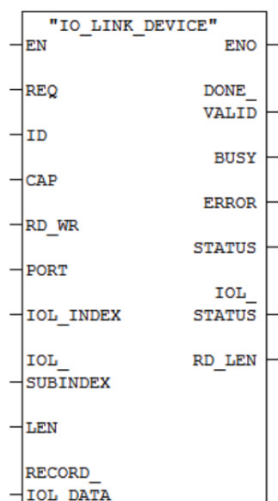


Figure 27: STEP 7 V5.5

Service data are uniquely addressed via the index and the sub-index and can be accessed or written via the logical start address of the status/control module (ID) inputs, the client access point (CAP = 255) and the corresponding IO-Link port (PORT). 1 - 8 for IO-Link ports).

i NOTE

If the logical input address for the IO_LINK_CALL module is used, it may be necessary for the input address to be the lesser than or equal to the output address. It may be necessary to modify this value manually in the Engineering Tool.

Operand	Symbol	Anzeigeformat	Statuswert	Steuwert
//IO_LINK_CALL Input Parameters				
1 DB1.DBX 0.0	"IO_LINK_CALL_DATA" REQ	BOOL	false	true
3 DB1.DBD 2	"IO_LINK_CALL_DATA" ID	DEZ	L#0	L#0
4 DB1.DBW 6	"IO_LINK_CALL_DATA" CAP	DEZ	255	255
5 DB1.DBX 8.0	"IO_LINK_CALL_DATA" RD_VWR	BOOL	false	false
6 DB1.DBW 10	"IO_LINK_CALL_DATA" PORT	DEZ	4	4
7 DB1.DBW 12	"IO_LINK_CALL_DATA" IOL_INDEX	DEZ	24	24
8 DB1.DBW 14	"IO_LINK_CALL_DATA" IOL_SUBINDEX	DEZ	0	0
9 DB1.DBW 16	"IO_LINK_CALL_DATA" LEN	DEZ	0	0
//IO_LINK_CALL Output Parameters				
12 DB1.DBX 28.0	"IO_LINK_CALL_DATA" DONE_VALID	BOOL	false	
13 DB1.DBX 28.1	"IO_LINK_CALL_DATA" BUSY	BOOL	false	
14 DB1.DBX 28.2	"IO_LINK_CALL_DATA" ERROR	BOOL	false	
15 DB1.DBD 30	"IO_LINK_CALL_DATA" STATUS	HEX	D#W16#00000000	
16 DB1.DBD 34	"IO_LINK_CALL_DATA" IOL_STATUS	HEX	D#W16#00010000	
17 DB1.DBW 38	"IO_LINK_CALL_DATA" RD_LEN	HEX	W#16#0000	
//IO_LINK_CALL Device Data				
20 MB 100		ZEICHEN	'B'	
21 MB 101		ZEICHEN	'E'	
22 MB 102		ZEICHEN	'L'	
23 MB 103		ZEICHEN	'D'	
24 MB 104		ZEICHEN	'E'	
25 MB 105		ZEICHEN	'N'	
26 MB 106		ZEICHEN	''	
27 MB 107		HEX	B#16#20	

Processing the function module always takes several PLC cycles. Calling and the use of IO-Link port functions, and non-volatile backing up or restoring of device data, must be managed by the user program. For more details, see the SIEMENS document "Acyclic reading and writing (IO-Link Library)".

6.6 SNMP

The IO-Link master devices support required objects required by the PROFINET specification as per protocol standard SNMP v1.

These include objects from RFC 1213 MIB-II (System Group and Interfaces Group) and the LLDP MIB.

Passwords:

- Read Community: public
- Write Community: private

6.7 Media Redundancy Protocol (MRP)

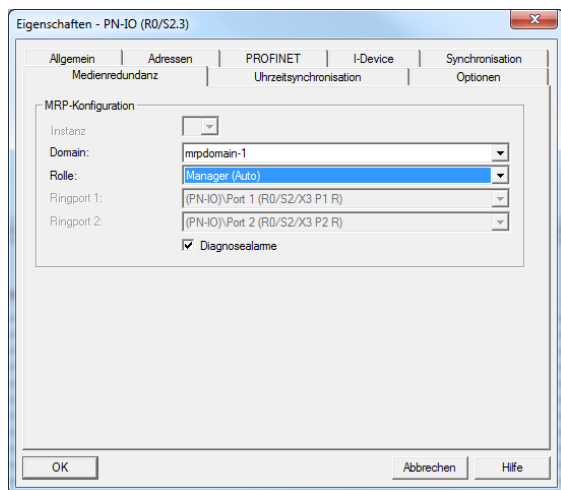
Redundant PROFINET communication can be implemented with the LioN-P modules via a ring topology without the use of additional switches. A MRP redundancy manager terminates the ring, detects individual failures, and transmits the data packets on the redundant path in case of error.

The following conditions must be met to use MRP:

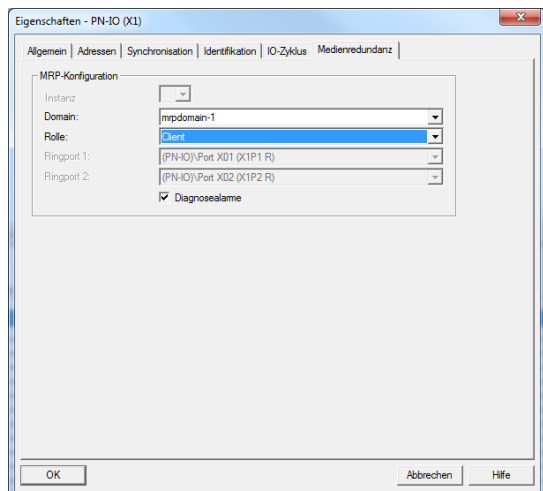
- ▶ All devices must support MRP.
- ▶ MRP must be enabled on all devices.
- ▶ Connections to the devices are only possible via the ring ports. A mesh topology is not permissible.
- ▶ A max. of 50 devices are permissible in the ring.
- ▶ All devices share the same redundancy domain.
- ▶ One device must be configured as the redundancy manager.
- ▶ All other devices must be configured as redundancy clients.
- ▶ Prioritized boot (FSU) is permissible.
- ▶ The response monitoring time of all devices must be greater than the reconfiguration time (typically 200 ms, min. 90 ms for LioN-P modules).
- ▶ It is recommended to use automatic network settings on all devices.

The following figures show a possible MRP ring configuration. The PLC is used as the redundancy manager while all other devices are clients. To detect an individual failure, it is advisable to use the diagnostics alerts.

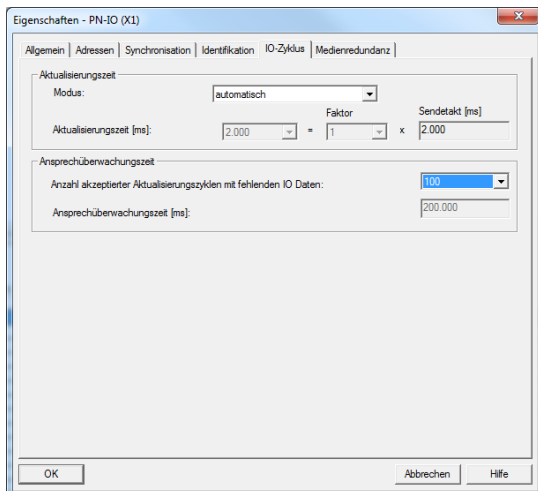
Example of setting up the MRP redundancy manager in STEP7:



Example of setting up an MRP redundancy client in STEP7:



Example of setting up the response monitoring times in STEP7:



6.8 Identification & maintenance functions (I&M)

The PROFINET module has the ability to uniquely identify the devices installed in the system via an electronic nameplate. This device-specific data can be read acyclically by the user at any time. Furthermore, the installation date, location code and further descriptions can be stored in the module when creating the system. The I&M functions provide this functionality.

6.8.1 Supported I&M features

■ Module-specific I&M features

The module-specific I&M features 0 through 4 can be read or written via slot 0. The specified index is used for mapping the data sets.

Data object	Length [byte]	Access	Default value / Description
MANUFACTURER_ID	2	Read	0x016A (Belden Deutschland GmbH)
ORDER_ID	20	Read	Order number of module in ASCII
SERIAL_NUMBER	16	Read	Defined in production process in ASCII
HARDWARE_REVISION	2	Read	Hardware revision of device
SOFTWARE_REVISION	4	Read	Software revision of device
REVISION_COUNTER	2	Read	Incremented for every statically stored parameter change on IO-Link master (e.g., device name or IP address)
PROFILE_ID	2	Read	0xF600 (Generic device)
PROFILE_SPECIFIC_TYPE	2	Read	0x0003 (IO modules)
IM_VERSION	2	Read	0x0101 (I&M Version 1.1)
IM_SUPPORTED	2	Read	0x001E (I&M 1...4 is supported)

Table 8: I&M 0 (Slot 0, Index 0xAFF0)

Data object	Length [byte]	Access	Default value / Description
TAG_FUNCTION	32	Read/Write	0x20 ff. (empty)
TAG_LOCATION	22	Read/Write	0x20 ff. (empty)

Table 9: I&M 1 (Slot 0, Index 0xAFF1)

Data object	Length [byte]	Access	Default value / Description
INSTALLATION_DATE	16	Read/Write	0x20 ff. (empty); Supported data format is a visible string with a fix length of 16 byte; "YYYY-MM-DD hh:mm" or "YYYY-MM-DD" filled with blank spaces

Table 10: I&M 2 (Slot 0, Index 0xAFF2)

Data object	Length [byte]	Access	Default value / Description
DESCRIPTOR	54	Read/Write	0x20 ff. (empty)

Table 11: I&M 3 (Slot 0, Index 0xAFF3)

Data object	Length [byte]	Access	Default value / Description
SIGNATURE	54	Read/Write	0x20 ff. (empty)

Table 12: I&M 4 (Slot 0, Index 0xAFF4)

■ IO-Link master I&M functions

The IO-Link master-specific I&M functions 0 and 99 can be read via slot 1. The specified index is used for mapping the data sets.

Data object	Length [byte]	Access	Default value / Description
MANUFACTURER_ID	2	Read	0x016A (Belden Deutschland GmbH)
ORDER_ID	20	Read	Order number of module
SERIAL_NUMBER	16	Read	Defined in production process
HARDWARE_REVISION	2	Read	Hardware revision of device
SOFTWARE_REVISION	4	Read	Software revision of device
REVISION_COUNTER	2	Read	Incremented for every statically stored parameter change on IO-Link master (e.g., device name or IP address)
PROFILE_ID	2	Read	0x4E00 (IO-Link master)
PROFILE_SPECIFIC_TYPE	2	Read	0x0000
IM_VERSION	2	Read	0x0101 (I&M Version 1.1)
IM_SUPPORTED	2	Read	0x0001 (Profile specific)

Table 13: I&M 0 (Slot 1, Index 0xAFF0)

Data object	Length [byte]	Access	Default value / Description
IOL_VERSION	1	Read	0x11 (IO-Link version 1.1)
IOL_PROFILE_VERSION	1	Read	0x10 (IO-Link profile version 1.0)
IOL_FEATURE_SUPPORT	4	Read	0x00000000
NUMBER_OF_PORTS	1	Read	0x08 (Number of supported IO-Link ports)
REF_PORT_CONFIGURATION	1	Read	0x00 (No port configuration data supported)
REF_IO_MAPPING	1	Read	0x00 (No I/O mapping data supported)
REF_IPAR_DIRECTORY	1	Read	0x00 (No iPar directory supported)
REF_IOL_M	1	Read	0x00 (No IOL-M parameter supported)
NUMBER_OF_CLIENT_ACCESS_POINTS	1	Read	0x01 (Number of Client Access Points)
INDEX_CAP1	1	Read	0xFF (Client Access Point for IOL_CALL)

Table 14: I&M 99 (Slot 1, Index 0xB063)

■ IO-Link device I&M functions

The IO-Link device-specific I&M functions 16 and 23 can be read via slot 1, sub-slot 1. The specified index is used for mapping the data sets. Only data not equal to zero are received if a connection to an IO-Link device can be established.

Data object	Length [byte]	Access	Default value / Description
VENDOR_ID	2	Read	0x0000 (IO-Link device vendor ID)
DEVICE_ID	4	Read	0x00000000 (IO-Link device ID)
FUNCTION_ID	2	Read	0x0000 (IO-Link device function ID)
RESERVED	10	Read	0x00 ff.

Table 15: I&M 16...23 (Slot 1, Subslot 1, Index 0xB000...0xB007)

6.8.2 Reading and writing I&M data

In its standard library, SIEMENS offers **STEP 7** system function modules that allow I&M data to be read and written. A data set contains a 6-byte block header and the actual I&M record.

The data requested on reading, or the data to be written thus only start after the existing header. On writing, the header content must additionally be taken into account. Following table shows the structure of a data set.

Data object	Length [byte]	Data type	Coding	Description
BlockType	2	Word	I&M 0: 0x0020 i&M 1: 0x0021 i&M 2: 0x0022 i&M 3: 0x0023 i&M 4: 0x0024 i&M 16...23: 0x0F00 i&M 99: 0x0F00	BlockHeader
BlockLength	2	Word	I&M 0: 0x0038 i&M 1: 0x0038 i&M 2: 0x0012 i&M 3: 0x0038 i&M 4: 0x0038 i&M 16...23: 0x0014 i&M 99: 0x000F	
BlockVersionHigh	1	Byte	0x01	
BlockVersionLow	1	Byte	0x00	

Data object	Length [byte]	Data type	Coding	Description
I&M Data	I&M 0: 54	Byte		I&M Record
	I&M 1: 54			
	I&M 2: 16			
	I&M 3: 54			
	I&M 4: 54			
	I&M 16...23: 18			
	I&M 99: 13			

I&M Read Record

I&M data can be read via the standard RDREC (SFB52) function block in **STEP 7**. The logical address of the slot/sub-slot (ID) and the I&M index (INDEX) must be used as handover parameters. The return parameters show the length of the I&M data received, and contain a status or error message.

Example of a completed I&M 0 read action:

	Operand	Symbol	Anzeigeformat	Statuswert	Steuervert
26	// FB inputs				
27	DB152.DBX 0.0	"PNIO_IM_RD_DB" REQ	BOOL	false	true
28	DB152.DBD 2	"PNIO_IM_RD_DB" ID	DEZ	L#8185	L#8185
29	DB152.DBW 6	"PNIO_IM_RD_DB" IM_INDEX	HEX	W#16#AFF0	W#16#AFF0
30					
31	// FB outputs				
32	DB152.DBX 8.0	"PNIO_IM_RD_DB" VALID	BOOL	true	
33	DB152.DBX 8.1	"PNIO_IM_RD_DB" BUSY	BOOL	false	
34	DB152.DBX 8.2	"PNIO_IM_RD_DB" ERROR	BOOL	false	
35	DB152.DBD 10	"PNIO_IM_RD_DB" STATUS	HEX	DIV#16#00000000	
36	DB152.DBW 14	"PNIO_IM_RD_DB" LEN	DEZ	54	
37					
38	// Data header				
39	DB52.DBB 0	"PNIO_IM_RD_DATA" IM_DATA[1]	HEX	B#16#00	
40	DB52.DBB 1	"PNIO_IM_RD_DATA" IM_DATA[2]	HEX	B#16#20	
41	DB52.DBB 2	"PNIO_IM_RD_DATA" IM_DATA[3]	HEX	B#16#00	
42	DB52.DBB 3	"PNIO_IM_RD_DATA" IM_DATA[4]	HEX	B#16#30	
43	DB52.DBB 4	"PNIO_IM_RD_DATA" IM_DATA[5]	HEX	B#16#01	
44	DB52.DBB 5	"PNIO_IM_RD_DATA" IM_DATA[6]	HEX	B#16#00	
45					
46	// Data record				
47	DB52.DBB 6	"PNIO_IM_RD_DATA" IM_DATA[7]	HEX	B#16#01	
48	DB52.DBB 7	"PNIO_IM_RD_DATA" IM_DATA[8]	HEX	B#16#6A	
49	DB52.DBB 8	"PNIO_IM_RD_DATA" IM_DATA[9]	HEX	B#16#39	
50	DB52.DBB 9	"PNIO_IM_RD_DATA" IM_DATA[10]	HEX	B#16#33	
51	DB52.DBB 10	"PNIO_IM_RD_DATA" IM_DATA[11]	HEX	B#16#34	
52	DB52.DBB 11	"PNIO_IM_RD_DATA" IM_DATA[12]	HEX	B#16#20	
53	DB52.DBB 12	"PNIO_IM_RD_DATA" IM_DATA[13]	HEX	B#16#38	
54	DB52.DBB 13	"PNIO_IM_RD_DATA" IM_DATA[14]	HEX	B#16#07	
55	DB52.DBB 14	"PNIO_IM_RD_DATA" IM_DATA[15]	HEX	B#16#38	
56	DB52.DBB 15	"PNIO_IM_RD_DATA" IM_DATA[16]	HEX	B#16#20	

I&M Write Record

I&M data can be written via the standard WRREC (SFB53) function block in **STEP 7**. The logical address of the slot/sub-slot (ID), the I&M index (INDEX) and the data length (LEN) must be used as handover parameters. The return parameters contain a status or error message.

Example of a completed I&M 1 write action:

	Operand	Symbol	Anzeigeformat	Statuswert	Steuerwert
11	// FB inputs				
12	DB153.DBX 0.0	"PHIO_M_WR_DB".REQ	BOOL	false	true
13	DB153.DBD 2	"PHIO_M_WR_DB".ID	DEZ	L#0185	L#0185
14	DB153.DBW 6	"PHIO_M_WR_DB".IM_INDEX	HEX	VW16#AFFF1	VW16#AFFF1
15	DB153.DBW 8	"PHIO_M_WR_DB".LEN	DEZ	60	54
16					
17	// FB outputs				
18	DB153.DBX 10.0	"PHIO_M_WR_DB".DONE	BOOL	true	
19	DB153.DBX 10.1	"PHIO_M_WR_DB".BUSY	BOOL	false	
20	DB153.DBX 10.2	"PHIO_M_WR_DB".ERROR	BOOL	false	
21	DB153.DBD 12	"PHIO_M_WR_DB".STATUS	HEX	DIV#16#00000000	
22					
23	// Data header				
24	DB53.DBB 0	"PHIO_M_WR_DATA".M_DATA[1]	HEX	B#16#00	
25	DB53.DBB 1	"PHIO_M_WR_DATA".M_DATA[2]	HEX	B#16#21	
26	DB53.DBB 2	"PHIO_M_WR_DATA".M_DATA[3]	HEX	B#16#00	
27	DB53.DBB 3	"PHIO_M_WR_DATA".M_DATA[4]	HEX	B#16#38	
28	DB53.DBB 4	"PHIO_M_WR_DATA".M_DATA[5]	HEX	B#16#01	
29	DB53.DBB 5	"PHIO_M_WR_DATA".M_DATA[6]	HEX	B#16#00	
30					
31	// Data record				
32	DB53.DBB 6	"PHIO_M_WR_DATA".M_DATA[7]	ZEICHEN	'S'	'S'
33	DB53.DBB 7	"PHIO_M_WR_DATA".M_DATA[8]	ZEICHEN	'A'	'A'
34	DB53.DBB 8	"PHIO_M_WR_DATA".M_DATA[9]	ZEICHEN	'M'	'M'
35	DB53.DBB 9	"PHIO_M_WR_DATA".M_DATA[10]	ZEICHEN	'P'	'P'
36	DB53.DBB 10	"PHIO_M_WR_DATA".M_DATA[11]	ZEICHEN	'L'	'L'
37	DB53.DBB 11	"PHIO_M_WR_DATA".M_DATA[12]	ZEICHEN	'E'	'E'
38	DB53.DBB 12	"PHIO_M_WR_DATA".M_DATA[13]	HEX	B#16#20	
39	DB53.DBB 13	"PHIO_M_WR_DATA".M_DATA[14]	HEX	B#16#20	
40	DB53.DBB 14	"PHIO_M_WR_DATA".M_DATA[15]	HEX	B#16#20	
41	DB53.DBB 15	"PHIO_M_WR_DATA".M_DATA[16]	HEX	B#16#20	

7 Bit assignment

The LioN-P PROFINET IO-Link masters use a modular device model.

Slot 1 subslot 1 contains the IO-Link master status and control module. This module always has 4 bytes of input data and 4 bytes of output data; it is always statically configured on selecting a LioN-P IO-Link master from the GSD file.

The IO-Link ports use the following sub-slots 2 through 9 of slot 1; they can have a different operating mode and data length depending on the configuration.

7.1 Process data Status and Control module, slot 1/sub-slot 1

7.1.1 Digital IO mapping mode 1 (default mapping)

If mapping mode 1 was selected in the device configuration, the data of the Status and Control module are transferred as follows.

■ Input data of the Status/Control modules

Byte	Byte 0, Digital Input Status							
Bit	7	6	5	4	3	2	1	0
Port	X4	X4	X3	X3	X2	X2	X1	X1
Pin	2	4	2	4	2	4	2	4
Channel	4	4	3	3	2	2	1	1

Table 16: Byte 0, Digital Input Status

Byte	Byte 1, Digital Input Status							
Bit	7	6	5	4	3	2	1	0
Port	X8	X8	X7	X7	X6	X6	X5	X5
Pin	2	4	2	4	2	4	2	4
Channel	8	8	7	7	6	6	5	5

Table 17: Byte 1, Digital Input Status

Byte	Byte 2, IOL-COM state							
Bit	7	6	5	4	3	2	1	0
Port	X8	X7	X6	X5	X4	X3	X2	X1
Pin	4	4	4	4	4	4	4	4
Channel	8	7	6	5	4	3	2	1

Table 18: Byte 2, IOL-COM state

Byte	Byte 3, IOL-PD valid							
Bit	7	6	5	4	3	2	1	0
Port	X8	X7	X6	X5	X4	X3	X2	X1
Pin	4	4	4	4	4	4	4	4
Channel	8	7	6	5	4	3	2	1

Table 19: Byte 3, IOL-PD valid

Key:

- The digital input data return the status of the digital inputs.
- The data in the cells highlighted in blue are only available for LioN-P 60 devices; they represent the output status.
- Channel: Channel number of the PROFINET device model used for diagnostic messages.
- IOL-COM state: The "IOL-COM state" indicates whether the port has established communication with the IO-Link device.
- IOL-PD valid: The "IOL-PD valid" information indicates whether the IO-Link process data of the corresponding port are valid.

■ Output data of the Status/Control modules (except 0980 ESL 308-121)

Byte	Byte 0, Digital Output State							
Bit	7	6	5	4	3	2	1	0
Port	X4	X4	X3	X3	X2	X2	X1	X1
Pin	-	4	-	4	-	4	-	4
Channel	-	4	-	3	-	2	-	1

Table 20: Byte 0, Digital Output State

Byte	Byte 1, Digital Output State							
Bit	7	6	5	4	3	2	1	0
Port	X8	X8	X7	X7	X6	X6	X5	X5
Pin	2	4	2	4	2	4	2	4
Channel	8	8	7	7	6	6	5	5

Table 21: Byte 1, Digital Output State

Byte	Byte 2, COM mode							
Bit	7	6	5	4	3	2	1	0
Port	X8	X7	X6	X5	X4	X3	X2	X1
Pin	4	4	4	4	4	4	4	4
Channel	8	7	6	5	4	3	2	1

Table 22: Byte 2, COM mode

Byte	Byte 3, reserved							
Bit	7	6	5	4	3	2	1	0
Port	-	-	-	-	-	-	-	-
Pin	-	-	-	-	-	-	-	-
Channel	-	-	-	-	-	-	-	-

Table 23: Byte 3, reserved

Key:

- The data in the cells highlighted in blue are only available for LioN-P 60 devices.
- Byte 0 (**Pin 4, C/Q mode**): The digital output on the corresponding port can be controlled via the process data. The IO-Link port must be configured as a digital output in the Engineering Tool.
- Byte 2 (**COM mode**) can be used to temporarily (as long as the corresponding COM control bit is set) switch one or more IO-Link ports previously in digital input (DI) operating mode to IO-Link operating mode. As a result, it is possible to establish communications with the connected IO-Link device for parameterization. No process data are exchanged during this time.

■ Output data of the Status/Control modules for 0980 ESL 308-121

Byte	Byte 0, Digital Output State							
Bit	7	6	5	4	3	2	1	0
Port	X4	X4	X3	X3	X2	X2	X1	X1
Pin	-	-	-	-	-	-	-	-
Channel	-	-	-	-	-	-	-	-

Table 24: Byte 0, Digital Output State

Byte	Byte 1, Digital Output State							
Bit	7	6	5	4	3	2	1	0
Port	X8	X8	X7	X7	X6	X6	X5	X5
Pin	2	-	2	-	2	-	2	-
Channel	8	-	7	-	6	-	5	-

Table 25: Byte 1, Digital Output State

Byte	Byte 2, COM mode							
Bit	7	6	5	4	3	2	1	0
Port	X8	X7	X6	X5	X4	X3	X2	X1
Pin	4	4	4	4	4	4	4	4
Channel	8	7	6	5	4	3	2	1

Table 26: Byte 2, COM mode

Byte	Byte 3, reserved							
Bit	7	6	5	4	3	2	1	0
Port	-	-	-	-	-	-	-	-
Pin	-	-	-	-	-	-	-	-
Channel	-	-	-	-	-	-	-	-

Table 27: Byte 3, reserved

Key:

- ▶ **Byte 0 (Pin 4, C/Q mode):** The digital output on the corresponding port can be controlled via the process data. The IO-Link port must be configured as a digital output in the Engineering Tool.
- ▶ **Byte 2 (COM mode)** can be used to temporarily (as long as the corresponding COM control bit is set) switch one or more IO-Link ports previously in digital input (DI) operating mode to IO-Link operating mode. As a result, it is possible to establish communications with the connected IO-Link device for parameterization. No process data are exchanged during this time.

7.1.2 Digital IO mapping mode 2 (E2C compatibility)

If mapping mode 2 was selected in the device configuration, the data of the Status and Control module are transferred as follows.

■ Input data of the Status/Control modules

Byte	Byte 0, Digital Input Status							
Bit	7	6	5	4	3	2	1	0
Port	X8	X7	X6	X5	X4	X3	X2	X1
Pin	4	4	4	4	4	4	4	4
Channel	8	7	6	5	4	3	2	1

Table 28: Byte 0, Digital Input Status

Byte	Byte 1, Digital Input Status							
Bit	7	6	5	4	3	2	1	0
Port	X8	X7	X6	X5	X4	X3	X2	X1
Pin	2	2	2	2	2	2	2	2
Channel	8	7	6	5	4	3	2	1

Table 29: Byte 1, Digital Input Status

Byte	Byte 2, IOL-COM state							
Bit	7	6	5	4	3	2	1	0
Port	X8	X7	X6	X5	X4	X3	X2	X1
Pin	4	4	4	4	4	4	4	4
Channel	8	7	6	5	4	3	2	1

Table 30: Byte 2, IOL-COM state

Byte	Byte 3, IOL-PD valid							
Bit	7	6	5	4	3	2	1	0
Port	X8	X7	X6	X5	X4	X3	X2	X1
Pin	4	4	4	4	4	4	4	4
Channel	8	7	6	5	4	3	2	1

Table 31: Byte 3, IOL-PD valid

Key:

- ▶ The digital input data return the status of the digital inputs.
- ▶ The data in the cells highlighted in blue are only available for LioN-P 60 devices; they represent the output status.
- ▶ Channel: Channel number of the PROFINET device model used for diagnostic messages.
- ▶ IOL-COM state: The "IOL-COM state" indicates whether the port has established communication with the IO-Link device.
- ▶ IOL-PD valid: The "IOL-PD valid" information indicates whether the IO-Link process data of the corresponding port are valid.

■ Output data of the Status/Control modules (except 0980 ESL 308-121)

Byte	Byte 0, Digital Output State							
Bit	7	6	5	4	3	2	1	0
Port	X8	X7	X6	X5	X4	X3	X2	X1
Pin	4	4	4	4	4	4	4	4
Channel	8	7	6	5	4	3	2	1

Table 32: Byte 0, Digital Output State

Byte	Byte 1, Digital Output State							
Bit	7	6	5	4	3	2	1	0
Port	X8	X7	X6	X5	X4	X3	X2	X1
Pin	2	2	2	2	-	-	-	-
Channel	8	7	6	5	-	-	-	-

Table 33: Byte 1, Digital Output State

Byte	Byte 2, COM mode							
Bit	7	6	5	4	3	2	1	0
Port	X8	X7	X6	X5	X4	X3	X2	X1
Pin	4	4	4	4	4	4	4	4
Channel	8	7	6	5	4	3	2	1

Table 34: Byte 2, COM mode

Byte	Byte 3, reserved							
Bit	7	6	5	4	3	2	1	0
Port	-	-	-	-	-	-	-	-
Pin	-	-	-	-	-	-	-	-
Channel	-	-	-	-	-	-	-	-

Table 35: Byte 3, reserved

Key:

- ▶ The data in the cells highlighted in blue are only available for LioN-P 60 devices.
- ▶ **Byte 0 (Pin 4, C/Q mode):** The digital output on the corresponding port can be controlled via the process data. The IO-Link port must be configured as a digital output in the Engineering Tool.
- ▶ **Byte 2 (COM mode)** can be used to temporarily (as long as the corresponding COM control bit is set) switch one or more IO-Link ports previously in digital input (DI) operating mode to IO-Link operating mode. As a result, it is possible to establish communications with the connected IO-Link device for parameterization. No process data are exchanged during this time.

■ Output data of the Status/Control modules for 0980 ESL 308-121

Byte	Byte 0, Digital Output State							
Bit	7	6	5	4	3	2	1	0
Port	X8	X7	X6	X5	X4	X3	X2	X1
Pin	-	-	-	-	-	-	-	-
Channel	-	-	-	-	-	-	-	-

Table 36: Byte 0, Digital Output State

Byte	Byte 1, Digital Output State							
Bit	7	6	5	4	3	2	1	0
Port	X8	X7	X6	X5	X4	X3	X2	X1
Pin	2	2	2	2	-	-	-	-
Channel	8	7	6	5	-	-	-	-

Table 37: Byte 1, Digital Output State

Byte	Byte 2, COM mode							
Bit	7	6	5	4	3	2	1	0
Port	X8	X7	X6	X5	X4	X3	X2	X1
Pin	4	4	4	4	4	4	4	4
Channel	8	7	6	5	4	3	2	1

Table 38: Byte 2, COM mode

Byte	Byte 3, reserved							
Bit	7	6	5	4	3	2	1	0
Port	-	-	-	-	-	-	-	-
Pin	-	-	-	-	-	-	-	-
Channel	-	-	-	-	-	-	-	-

Table 39: Byte 3, reserved

Key:

- ▶ **Byte 0 (Pin 4, C/Q mode):** The digital output on the corresponding port can be controlled via the process data. The IO-Link port must be configured as a digital output in the Engineering Tool.
- ▶ **Byte 2 (COM mode)** can be used to temporarily (as long as the corresponding COM control bit is set) switch one or more IO-Link ports previously in digital input (DI) operating mode to IO-Link operating mode. As a result, it is possible to establish communications with the connected IO-Link device for parameterization. No process data are exchanged during this time.

7.2 Process data IO-Link ports, slot 1/sub-slot 2 - sub-slot 9

The process data lengths of the IO-Link ports in COM mode depend on the IO-Link port configurations X 1 - X 8. Data lengths between 1 - 32 bytes of input data and/or 1 - 32 bytes of output data are configurable.

The data content can be taken from the descriptions of the IO-Link devices.

If a precise data length is not available for the IO-Link device configuration, always select the next larger data length.

The mapping mode selected for the Status/Control modules has no influence on the process data of the IO-Link ports.

8 Diagnostics processing

8.1 Error in the system/sensor power supply

The voltage value for the incoming system/sensor power supply is also monitored globally. If the voltage drops below approx. 18,6 V, or exceeds approx. 30 V, an error message is generated.

The green U_S indicator is unlit.

The error message has no effect on the outputs.



Caution

It must definitely be ensured that the supply voltage, measured at the most remote participant is not below 18 V DC from the perspective of the system power supply.

The following group diagnostic message is generated:

Channel number of diagnosis	0x8000 (diagnosis not channel-specific)
Channel related diagnosis code	0x0002
Channel related diagnosis code message	Undervoltage
Extended description	Voltage fault of auxiliary power supply (U_{Aux}), detected by IO-Link master.

8.2 Error in auxiliary/actuator power supply

The voltage value for the incoming auxiliary/actuator power supply is also monitored globally. If U_{Aux} diagnostic messaging is enabled, an error message is generated if the voltage drops below approx. 18,6 V or exceeds approx. 30 V.

The U_{Aux} indicator shows red.

If output channels are enabled, additional error messages caused by the voltage failure are generated on the I/O ports.

U_{Aux} diagnostic messaging is disabled by default and must be enabled via parameterization.

The following group diagnostic message is generated:

Channel number of diagnosis	0x8000 (diagnosis not channel-specific)
Channel related diagnosis code	0x0103
Channel related diagnosis code message	Voltage fault of auxiliary power supply (U_{Aux}), detected by IO-Link master.

8.3 Overload/short-circuit of the I/O port sensor supply outputs

In case of an overload or a short circuit between pin 1 and pin 3 on the ports (X1 - X8), the following channel-specific diagnostic messages are generated:

Channel number of diagnosis	0x01 - 0x08
Channel related diagnosis code	0x01
Channel related diagnosis code message	Short circuit
Extended description	Short circuit or overload of sensor power supply at Pin 1 of I/O port detected by IO-Link master.

Alternatively, the following error message is generated:

Channel number of diagnosis	0x01 - 0x08
Channel related diagnosis code	0x0113
Channel related diagnosis code message	High temperature limit of IO-Link port driver exceeded (short circuit or overload), detected by IO-Link master.

8.4 Overload/short circuit of the digital 500 mA outputs

The digital outputs on the C/Q pin (except 0980 ESL 3x8-121) are short circuit and overload protected. In case of a fault, the output is automatically switched off and cyclically automatically switched back on.

The device sends the following PROFINET diagnostic message in case of a fault:

Channel number of diagnosis	0x01 - 0x08
Channel related diagnosis code	0x010A
Channel related diagnosis code message	Short circuit or overload of digital output at Pin 4 /Ch. A of IO-L port in DIO mode, detected by IO-Link master.

8.5 Overload/short circuit of the digital 2.0 A outputs

There are four 2.0 A (1,6 A for 0980 ESL 3x8-121) outputs on the Class B ports of the LioN-P 60 devices.

A channel error is determined by comparing the target value set by a controller and the actual value of an output channel.

Target value	Actual value	Comment
Active	Active	OK, no diagnosis

Table 40: Interpretation of channel errors

Target value	Actual value	Comment
Off	Off	OK, no diagnosis
Active	Off	Short-circuit Channel indicator is red. Channel error bit in the diagnosis is set. Channel is locked after the error is rectified.

Table 40: Interpretation of channel errors

When an output channel is activated (rising edge of the channel state) or deactivated (falling edge), the channel errors are filtered for the period that you set using the "Surveillance-Timeout" parameter during the configuration of the module. The value of this parameter can range from 0 to 255 ms; the factory setting is 80 ms.

The filter is used to avoid premature error messages when a capacitive load is activated or an inductive load is deactivated, and during other voltage peaks when a status changes.

In static state of the output channel, that is, while the channel is permanently switched on or off, the filter time between error detection and the diagnostic message is typically 5-10 ms.

The device sends the following PROFINET diagnostic message in this fault case:

Channel number of diagnosis	0x05 - 0x08
Channel related diagnosis code	0x0109
Channel related diagnosis code message	Short circuit or overload of digital output at Pin 2/Ch. B of Type B I/O port, detected by IO-Link master.

8.6 Overload/short circuit of the type B port aux. power supply

8.6.1 For LioN-P 30 devices

In case of an overload or a short circuit between pin 2 and pin 5 on these ports (X5 - X8), the following group diagnostic message (non channel-specific) is generated:

Channel number of diagnosis	0x8000 (diagnosis not channel-specific)
Channel related diagnosis code	0x0108
Channel related diagnosis code message	Short circuit or overload of auxiliary power supply at Pin 2 of type B I/O ports, detected by IO-Link master.

8.6.2 For LioN-P 60 devices

In case of an overload or a short circuit between pin 2 and pin 5 on these ports (X5 - X8), the following channel-specific diagnostic message is generated:

Channel number of diagnosis	0x05 - 0x08
Channel related diagnosis code	0x0108
Channel related diagnosis code message	Short circuit or overload of auxiliary power supply at Pin 2 of Type B I/O ports, detected by IO-Link master.

8.7 IO-Link C/Q error

If an IO-Link device in COM mode is unplugged, an incorrect IO-Link device is plugged in, or an electrical fault occurs on the C/Q (Pin 4) line, for example, due to a short circuit, then following error message is generated:

Channel number of diagnosis	0x01 - 0x08
Channel related diagnosis code	0x0006
Channel related diagnosis code message	Line break
Extended description	Missing/wrong device, broken wire or short circuit/overload at Pin 4/Ch. A of IO-L port, detected by IO-Link master.

8.8 IO-Link device diagnostics

Diagnoses of IO-Link devices that the device sends to the IO-Link master are reported through a standard channel diagnosis and an extended channel diagnosis.

Standard channel diagnosis message:

Channel number of diagnosis	0x01 - 0x08
Channel related diagnosis code	Depends on IO-Link device diagnosis
Channel related diagnosis code message	Depends on IO-Link device diagnosis

Extended channel diagnosis message:

Channel number of diagnosis	0x01 - 0x08
Ext. channel related diagnosis code	0x9000
Ext. channel value	EventCode<<16 ChannelNumber<<8 EventQualifier

- ▶ **EventCode:** Diagnostic code reported by the IO-Link device. Use the IO-Link device documentation to interpret the error message.
- ▶ **ChannelNumber:** 1-8 of the IO-Link master port whose connected device is reporting an error.
- ▶ **EventQualifier:**

	Mode		Type		Res.	Instance		
Bit	7	6	5	4	3	2	1	0

- ▶ **Event Qualifier Instance:**

Value	Definition
0	Unknown
1	Phy
2	DL
3	AL
4	Application
5..7	reserved

- ▶ **Event Qualifier Res.:**
This bit is reserved and must be set to 0.
- ▶ **Event Qualifier Type:**

Value	Definition
0	Reserved
1	Information
2	Warning

Value	Definition
3	Error

► Event Qualifier Mode:

Value	Definition
0	Reserved
1	Event single shot
2	Event disappears
3	Event appears

9 Port Configuration Tool

The Belden IO-Link Device Tool is a PC engineering software for configuring IO-Link devices via the Belden IO-Link Master. The engineering software communicates via UDP over the Ethernet interface of the IO-Link master. Therefore no additional hardware neither a running real time protocol is needed.

The tool can be used both as a standalone program or can be integrated via TCI (Tool Calling Interface) in PLC programming software such as STEP 7 or TIA Portal.

The key technological element for the operation of the connected devices is the mandatory IODD (IO Device Description) file.

The IODD is accepted worldwide. The Belden IO-Link Device Tool supports IO-Link V1.0 (IODDs V1.0.1) and IO-Link V1.1 (IODDs V1.1).

Main functions:

- IO-Link device project management
- Port configuration of IO-Link masters (without connected real-time controller)
- Operation and configuration of IO-Link devices via IODD

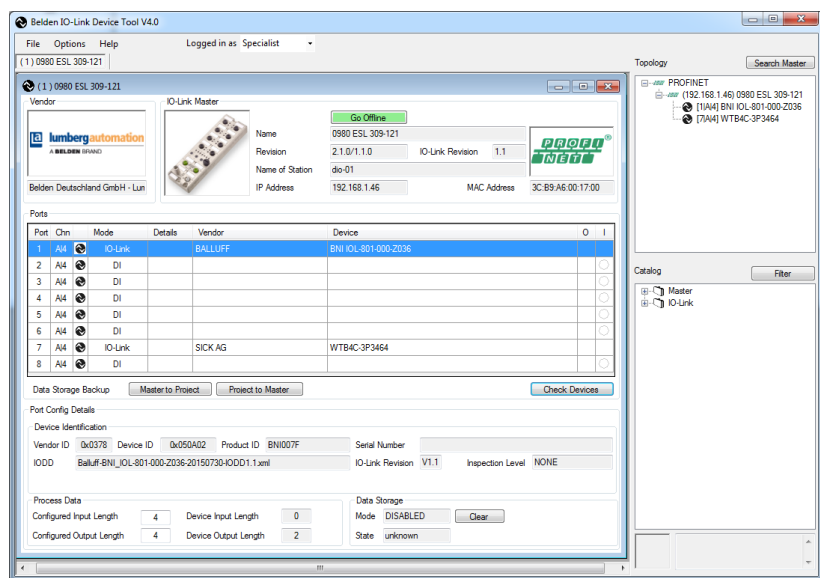
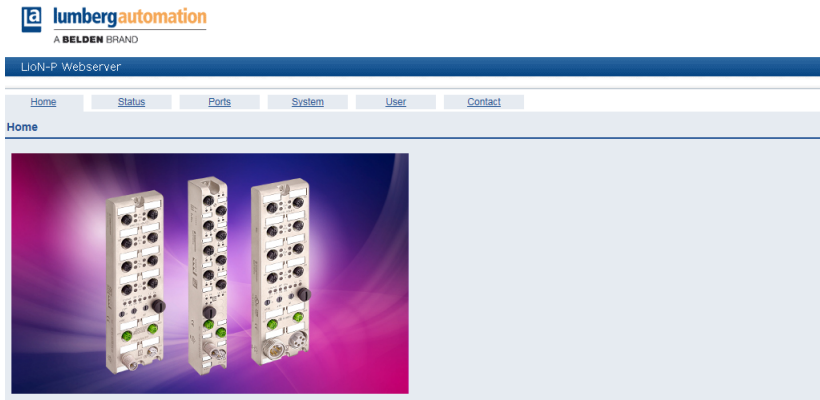


Figure 28: Port configuration tool - Main window

10 The integrated web server


The LioN-P modules are equipped with an integrated web server which makes functions available for the configuration of modules and display of status and diagnostic information.

Enter `http://` followed by the IP address, such as `http://192.168.1.5`, in your web browser's address bar. If the Home page of the module is not displayed, check your browser and firewall settings.



The web interface provides an overview of the configuration and status of the module. Also, certain settings can be made. It is also possible to use the web interface to trigger a reboot, reset to the factory defaults, or perform a firmware update.

10.1 The Status page



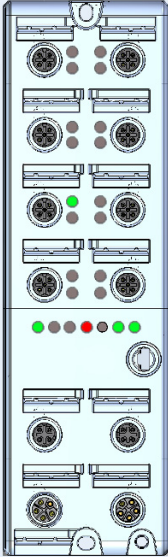
lumbergautomation
A BELDEN BRAND

LioN-P Webserver

[Home](#)
[Status](#)
[Ports](#)
[System](#)
[User](#)
[Contact](#)

Status

Device Overview



Device Information

Name	0990 ESL 309-121	
Bus	ON	
Device Diagnosis		
IO-Link Master Diagnosis		
Forcemode	Forcemode off	Switch on

Port Information

Port	Type	Pin / Channel	Function	State	Dia	Details
X1	IO-Link Class A + DI	4 / A	Digital Output 1 Bit Out	OFF		ⓘ
		2 / B	Digital Input 1 Bit in / NO	OFF		
X2	IO-Link Class A + DI	4 / A	Digital Input 1 Bit in / NO	OFF		ⓘ
		2 / B	Digital Input 1 Bit in / NO	OFF		
X3	IO-Link Class A + DI	4 / A	IO-Link 3 Bytes In, 1 Bytes Out	Operate		ⓘ
		2 / B	Digital Input 1 Bit in / NO	OFF		
X4	IO-Link Class A + DI	4 / A	IO-Link 8 Bytes In, 8 Bytes Out	Scan	DiA	ⓘ
		2 / B	Digital Input 1 Bit in / NO	OFF		
X5	IO-Link Class B + DO	4 / A	IO-Link SIO 1 Bit in / NO	OFF		ⓘ
		2 / B	AUX Power			
X6	IO-Link Class B + DO	4 / A	Digital Output 1 Bit Out	OFF		ⓘ
		2 / B	AUX Power			
X7	IO-Link Class B + DO	4 / A	Digital Input 1 Bit in / NO	OFF		ⓘ
		2 / B	AUX Power			
X8	IO-Link Class B + DO	4 / A	Digital Input 1 Bit in / NO	OFF		ⓘ
		2 / B	AUX Power			

The status page provides a quick overview of the current state of the module.

The left side shows a graphical representation of the module with all its LEDs and the positions of the rotary encoding switches.

The right side shows the "Device Information" table with some basic data for the module; for example, the variant, the cyclic communication status and a diagnostic indicator. The indicator shows whether a diagnosis for the module exists.

The "Port Information" table shows the configuration and state of all the module's I/O ports.

► Force Mode:


The force mode is a test option for the plant engineer, the input and output data can be set from this web page. The physical input data and the logical output data from the controller can be overruled in this mode. For safety reasons this mode can be disabled by parametrization.

Column	Information
Port	Name of port
Type	Type of port. This can be DIO, IO-L A or IO-L B depending on the variant. The +DO supplement indicates that an additional 2A output is available here.
Pin	Corresponding pin on the M8/M12 slot
Function	Function configured via control
State	Current status. ON or OFF is displayed here for digital inputs or outputs. The COM status is displayed for IO-Link connections.
Dia	The diagnostics indicator shows whether a diagnosis exists for this channel.
Details	This link can be used to jump directly to the corresponding detailed view for this port. More information is then available.



WARNING

Using of the force mode can result in serious personal injury or damage to the equipment. Be careful when using the force mode.



A BELDEN BRAND

LioN-P Webserver

Home

Status

Ports

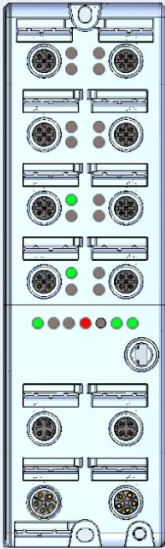
System

User

Contact

Status

Device Overview



Device Information

Name	0980 ESL 309-121	
Bus	ON	
Device Diagnosis	• Forcemode active	
IO-Link Master Diagnosis		
Forcemode	Forcemode on	Switch off

Port Information

Port	Type	Pin / Channel	Function	State	Dia	Details
X1	IO-Link Class A + DI	4 / A	Digital Output 1 Bit Out	<div>DEF 0 1</div>		①
		2 / B	Digital Input 1 Bit In / NO	<div>DEF 0 1</div>		
X2	IO-Link Class A + DI	4 / A	Digital Input 1 Bit In / NO	<div>DEF 0 1</div>		①
		2 / B	Digital Input 1 Bit In / NO	<div>DEF 0 1</div>		
X3	IO-Link Class A + DI	4 / A	IO-Link 0 Bytes In, 0 Bytes Out	<div>Scan</div>	DIA	①
		2 / B	Digital Input 1 Bit In / NO	<div>DEF 0 1</div>		
X4	IO-Link Class A + DI	4 / A	IO-Link 0 Bytes In, 0 Bytes Out	<div>Scan</div>	DIA	①
		2 / B	Digital Input 1 Bit In / NO	<div>DEF 0 1</div>		
X5	IO-Link Class B + DO	4 / A	IO-Link SIO 1 Bit In / NO	<div>DEF 0 1</div>		①
		2 / B	AUX Power			
X6	IO-Link Class B + DO	4 / A	Digital Output 1 Bit Out	<div>DEF 0 1</div>		①
		2 / B	AUX Power			
X7	IO-Link Class B + DO	4 / A	Digital Input 1 Bit In / NO	<div>DEF 0 1</div>		①
		2 / B	AUX Power			
X8	IO-Link Class B + DO	4 / A	Digital Input 1 Bit In / NO	<div>DEF 0 1</div>		①
		2 / B	AUX Power			

10.2 The Ports page

lumbergautomation
A BELDEN BRAND

LioN-P Webserver

Home Status **Ports** System User Contact

IO-Link

Show details for port

☐ X1 ☐ X2 ☒ X3 ☐ X4 ☐ X5 ☐ X6 ☐ X7 ☐ X8

Port Information		IO-Link	
Port	X3	Vendor ID	0x1 / (dec: 1)
Type	IO-Link Class A + DI	Device ID	0x110903
Dia		Vendor Name	Pepper+Fuchs
Port Diagnosis		Vendor Text	www.pepper-fuchs.com/io-link
Pin 4 / Channel A		Product Name	OMT100-R100-2EP-IO-Q3M-V1
Function	IO-Link 3 Bytes In, 1 Bytes Out	Product ID:	267075-100090
State	Operate	Product Text	Distance sensor
Pin 2 / Channel B		Serial No.	40000031420097
Function	Digital Input 1 Bit In / NO	HW Revision	HW01.00
State	OFF 0	FW Revision	FW01.00
		Application Name (Tag)	Your automation, our passion.
		Input Data	<div>02 00 0b</div>
		Output Data	<div>00</div>
		Index:	<input type="text"/>
		Subindex:	<input type="text"/>
		Parameter Read/Write	<div>Read Write</div>

Detailed port information is shown here.

"Port Diagnosis" shows incoming and outgoing diagnoses in clear text. "Pin 2" and "Pin 4" contain information about the configuration and state of the port. For IO-Link ports, additional information relating to the connected sensor and the process data is displayed.

10.3 The System page

lumbergautomation
A BELDEN BRAND

LioN-P Webserver

Home Status Ports **System** User Contact

System

General Information

Firmware	
Name	LioN-P PROFINET IO-Link Master
Version	V2.1.0.3 - 17.10.2016 / Web: 13
Device	
Name	0980 ESL 309-121
Ordering Number	934 878 004
Hardware	V 1.0
Serial Number	12345
Production Date	32 / 2015
Ethernet	
MAC Address	3C B9 A6 00 33 AE
Port 0	100M Full
Port 1	Link Down
Network	
IP-Address	192.168.1.5
Subnetmask	255.255.255.0
Gateway	0.0.0.0
Fieldbus	
Name of Station	
State	Not Connected

Restart device

☐ Confirm to restart the device. All connections will be closed.

Restart

Reset configuration to factory defaults

☐ Confirm to reset the device. All configuration data will be overwritten by default values!

Factory Reset

Firmware update

FW-Update

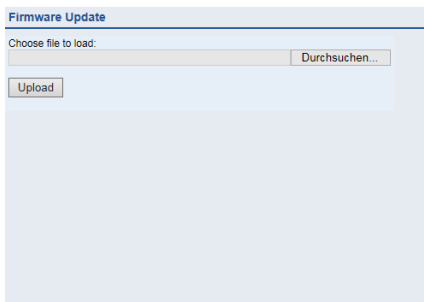
The System page shows basic information for the module. The current firmware, its version, and the firmware date can be viewed below "Firmware" as well as the version of the web interface.

All the information about the module itself is located below "Device".

On this page you have the option to access the following values and parameters:

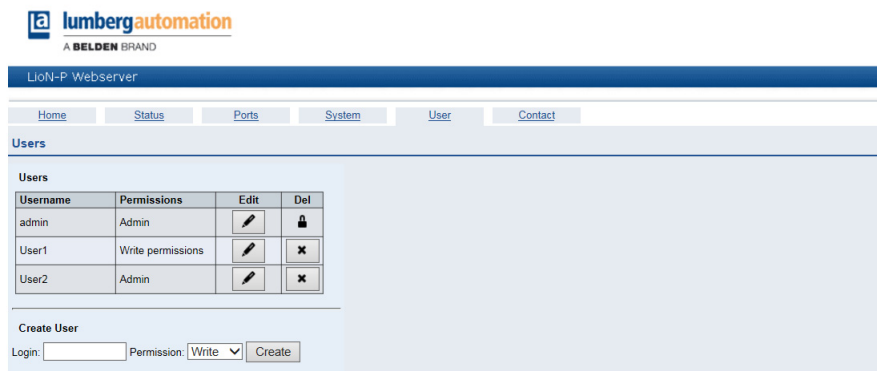
- ▶ Restart Device:
The module initializes a software reset.
- ▶ Reset to Factory Settings:
The module restores to the default factory settings.
- ▶ Firmware Update:
The module initializes a Firmware update.

For a firmware update choose the *.ZIP container available on our website or ask our support team. Afterwards follow the instructions shown on your screen.



The screenshot shows a web interface titled "Firmware Update". Below the title, there is a section labeled "Choose file to load:". This section contains a text input field and a button labeled "Durchsuchen...". Below this, there is a button labeled "Upload". The rest of the page is a light blue background.

10.4 The User page



The User page provides the user management of the web interface. New users with access rights **Admin** or **Write** can be added here. For security reasons please change the default admin password immediately after configuring the device.

11 Technical data

11.1 General

Protection class	IP65 IP67 IP69K (This only applies if the connectors are screwed together or covers are used.) (not under UL investigation)
Ambient temperature	-20 °C to +70 °C (- 4 °F to +158 °F)
Weight (LioN-P 30)	480g
LioN-P 60	500g
Humidity	98% ambient humidity (for UL certification: 80% ambient humidity)
Housing material	Die-cast zinc
Surface finish	Matt nickel
Flammability class	UL 94 (IEC 61010)
Vibration resistance (oscillation) DIN EN 60068-2-6 (2008-11)	15 g / 5-500 Hz
Shock resistance DIN EN 60068-2-27 (2010-02)	50 g / 11 ms +/- X,Y,Z
Torques:	
M4 fixing screws	1 Nm
M4 ground connection	1 Nm
M8 connector	0.5 Nm
M12 connector	0.5 Nm

Table 41: General information

11.2 PROFINET protocol

Protocol	PROFINET IO Device Conformance Class C (CC-C)
Update cycle	1 ms
GSDML file	GDSML-V2.3x-LumbergAutomation-LioN-P- yyyymmdd.xml
Transmission rate	100 Mbit/s, full duplex

Table 42: PROFINET protocol

Transmission procedure	100BASE-TX
Autonegotiation	is supported
Vendor ID	016A _H
DeviceID	0305 _H
Supported Ethernet protocols	<ul style="list-style-type: none"> ▶ Ping ▶ ARP ▶ LLDP ▶ SNMPv1 (network diagnostics) <ul style="list-style-type: none"> ▶ Read Community: public ▶ Write Community: private ▶ DCP ▶ HTTP ▶ TCP/IP ▶ MRP Client
Switch functionality	Integrated IRT is supported
PROFINET interface	
Connections	2 M12 sockets, 4-pin, D-coded (see pin assignments) 2 M12 Hybrid male/female, 8-pin is supported
Autocrossing	
Electrically isolated	
Ethernet ports -> PE	2000 V DC

Table 42: PROFINET protocol

11.3 Power supply for the module electronics/sensors

Nominal voltage U_S	24 V DC (SELV/PELV)
Voltage range	18-30 V DC
Power consumption of module electronics	Typically 160 mA (+/- 20% at U_S rated)
Voltage level of the sensor power supply	Min. ($U_S - 1.5$ V)
Current consumption sensor system (L+ / Pin 1)	max. 500 mA per port (at $T_{\text{ambient}} = 30$ °C) (for UL application 400mA)
Short circuit/overload protection of sensor ver.	yes, per port
Reverse polarity protection	Yes
Operational indicator (U_S)	LED green, $U_S > 18,6$ V or $U_S < 30$ V
Port X03, X04	M12 power, connector/socket, 5-pole
or Port X01, X02 (LioN-P 30 only)	M12 hybrid, connector/socket, 8-pole

Table 43: Information on the power supply for the module electronics/sensors

11.4 Power supply type B ports (auxiliary supply)

Rated voltage U_{Aux}	24 V DC (SELV/PELV)
Voltage range	18-30 V DC
Reverse polarity protection	Yes
Operational indicator (U_{Aux})	LED green, $U_{Aux} > 18,6 \text{ V}$ or $U_{Aux} < 30 \text{ V}$ LED red, $U_{Aux} < 18,6 \text{ V}$ or $U_{Aux} \geq 30 \text{ V}$ * if "Report U_{Aux} supply voltage fault is enabled.
Port X03, X04 or Port X01, X02 (LioN-P 30 only)	M12 power, connector/socket, 5-pole M12 hybrid, connector/socket, 8-pole

Table 44: Information on the power supply for the type B ports (auxiliary supply)

11.5 IO-Link master ports (X1-X8, Ch. A/C/Q/ Pin 4)

Port X01 – X08 or Port X01, X08 (LioN-P 30 only)	M12 socket, 5-pin M8 socket, 5-pin
--	---------------------------------------

Table 45: Information on the power supply for the module electronics/sensors

11.5.1 Configured as a digital input

Input connection	Type 1 as per IEC 61131-2
Nominal input voltage	24 V DC
Input current	Typically 3 mA
Channel type	Normally open, p-switching
Number of digital inputs	8
Status indicator	Yellow LED
Diagnosis indicator	Red LED per channel

Table 46: IO-Link master ports configured as digital inputs

11.5.2 Configured as a digital output (except 0980 ESL 308-121)

i NOTE

Power is supplied to the 500mA outputs via the U_S power supply.

Output type	Normally open, p-switching
Nominal output current per channel	500 mA (for UL application 400 mA)
Signal status "1"	Max. 500 mA
Signal status "0"	Max. 1 mA
Signal level of the outputs	
Signal status "1"	Min. ($U_S - 1$ V)
Signal status "0"	max. 2 V
Max. output current per device	16 A (M12 Power) (for UL application 9 A) 6 A (M12 Hybrid)
Short-circuit/overload protected	yes/yes
Behavior in case of short circuit or overload	Disconnection with automatic power on
Number of digital outputs	LioN-P 30: max. 8 (Pin 4) LioN-P 60: max. 8 (Pin 4) + 4 (Pin 2)
Status indicator	LED yellow per output
Diagnosis indicator	Red LED per channel

Table 47: IO-Link master ports configured as digital outputs

11.5.3 Configured as an IO-Link port in COM mode

IO-Link master specification	v1.1, IEC 61131-9
Communication rates	4.8 (COM 1), 38.4 (COM 2) and 230.4 kbaud (COM 3)
Line lengths in the IO-Link device	max. 20 m
Number of IO-Link ports (type A/type B)	8
Number of type A ports (X1, X2, X3, X4)	4
Number of type B ports (X5, X6, X7, X8)	4

Table 48: As an IO-Link port in COM mode

11.6 Digital inputs (X1 – X4, type A ports, ch. B/pin 2)

Input connection	Type 1 as per IEC 61131-2
Nominal input voltage	24 V DC
Input current	Typically 3 mA
Channel type	Normally open, p-switching
Number of digital inputs	4
Status indicator	LED white
Diagnosis indicator	Red LED per channel
Port	M12 socket, 5-pin
	M8 socket, 5-pin

Table 49: Digital inputs (X1 – X4, type A ports, ch. B/pin 2)

11.7 Lion-P 60: UAux config. as a digital 2 A output (X5 - X8, type B ports, ch. B/pin 2)

Output type	Normally open, p-switching
Nominal output current per channel	2 A (for UL application 1,8 A)
Signal status "1"	Max. 2 A
Signal status "0"	Max. 1 mA
Signal level of the outputs	
Signal status "1"	Min. ($U_{Aux} - 1$ V)
Signal status "0"	max. 2 V
Max. output current per device	16 A (M12 Power) (for UL application 9 A) 6 A (M12 Hybrid)
Short-circuit/overload protected	yes/yes
Filter time in case of signal change	0 - 255 ms, default setting 80 ms
Behavior in case of short circuit or overload	Disconnection without automatic power on
Number of digital outputs	4
Status indicator	LED white per output
Diagnosis indicator	Red LED per channel

Table 50: Lion-P 60 digital 2-A outputs (X5 - X8, type B ports, ch. B/pin 2)

11.8 LEDs

U _{Aux}	Green	Auxiliary sensor/actuator voltage approx. >18,6 V - <30 V
	red*	Auxiliary sensor/actuator voltage approx. <18,6 V or >30 V * if "Report U(Aux) supply voltage fault" is enabled.
	off	None of the above conditions
U _S	Green	System/sensor voltage approx. >18,6 V - 30 V
	off	System/sensor voltage approx. <18,6 V - 30 V
X1...X8 A	Green	IO-Link COM mode: IO-Link communication exists
	Flashing green	IO-Link COM mode: No IO-Link communication.
	Yellow	Standard-I/O mode: Status of digital input or output on C/Q (pin 4) line "on"
	off	None of the above conditions
X1...X8 B	White	Status of digital input on pin 2 line "on"
	red	IO-Link COM mode: IO-Link communication error or Overload or short circuit on C/Q (pin 4) line
	red	All modes: Overload or short circuit on L+ (pin 1) line
	red	SIO mode: Overload or short circuit on C/Q (pin 4) line
	off	None of the above conditions
P1 Lnk/Act P2 Lnk/Act	Green	Ethernet connection to another subscriber exists. Link detected.
	Flashing yellow	Data exchange with another subscriber.
	off	No connection to another subscriber. No link, no data exchange.
BF	Red	Bus fault. No configuration, no or slow physical connection
	Red flashing at 2 Hz	Link exists but no communication link to the PROFINET controller
	off	PROFINET controller has established an active connection to the device
DIA	Red	PROFINET diagnostic alarm active
	Red flashing at 1 Hz	Watchdog time-out; fail safe mode is active
	Red flashing at 2 Hz, 3 sec	DCP signal service is initiated via the bus
	Red double flash	Firmware update
	off	None of the above conditions

Table 51: Information on the LED colors

12 Accessories

Item number	Description
0985 706 100/... M	Connection cable for Ethernet interface, assembled with M12 connector at both ends, straight, 4-pin, D-coded, 24AWG TPE with blue-green shield, highly flexible, multi-wire/unshielded, 2 twisted wire pairs.
0985 706 101/... M	Connection cable for Ethernet interface, crossover, with M12 connector at both ends, straight, 4-pin, D-coded, 24AWG TPE with blue-green shield, highly flexible, multi-wire/unshielded, 2 twisted wire pairs.
0985 706 103/... M	Connection cable for Ethernet interface, with M12 connector at both ends, straight, 4-pin, D-coded and RJ45 connector, 24AWG TPE with blue-green shield, highly flexible, multi-wire/unshielded, 2 twisted wire pairs.
0985 707 100/... M	Connection cable for Ethernet interface, with M12 connector at both ends, straight, 4-pin, D-coded, 24AWG PVC with blue-green shield, flexible, solid conductor/unshielded, 2 twisted wire pairs.
0985 707 101/... M	Connection cable for Ethernet interface, crossover, with M12 connector at both ends, straight, 4-pin, D-coded, 24AWG PVC with blue-green shield, flexible, solid conductor/unshielded, 2 twisted wire pairs.
0985 S4549 100/... M	Connection cable for Ethernet interface, with M12 connector at both ends, straight, 4-pin, D-coded, 26AWG PUR, halogen-free, with water-blue shield, multi-wire/shielded, 2 twisted wire pairs.
0985 S4549 103/... M	Connection cable for Ethernet interface, with M12 connector at both ends, straight, 4-pin, D-coded and RJ45 connector, 26AWG PUR, halogen-free, with water-blue shield, multi-wire/shielded, 2 twisted wire pairs.
0985 342 100/... M	Connection cable, M12-M12, Industrial Ethernet data line as per PROFINET type C, overmolded on both sides with M12 connectors, D-coded as per IEC 61076-2-101, 4-pin, PUR shield, halogen free, shielded, green
0985 342 102/... M	Connection cable for PROFINET, assembled on one side with an M12 connector, 4-pin, D-coded
0985 342 104/... M	Connection cable as per PROFINET type C, assembled on one side with an M12 connector, 4-pin, D-coded and RJ45 connector

Table 52: Connection cables for data transfer

Item number	Description
0986 EMC 102	M12 cable connector for PROFINET IO cable, straight, 4-pin, D-coded, connection for spring terminal

Table 53: Customizable connectors for data transfer

Item number	Description
RKT 5L-726/... M	M12 Power connection cable coupling L-coded, straight, unshielded, drag chain capable PUR
RKT 5L-727/... M	M12 Power connection cable coupling L-coded, straight, unshielded, drag chain capable PUR
RKT 5L-738/... MRKT	M12 Power connection cable coupling L-coded, straight, unshielded PUR
RKTS 5L-724/... M	M12 Power connection cable coupling L-coded, straight, shielded, drag chain capable PUR
RKTS 5L-725/... M	M12 Power connection cable coupling L-coded, straight, shielded, drag chain capable PUR
RKTS 5L-737/... M	M12 Power connection cable coupling L-coded, straight, shielded PUR
RKWT 5L-726/... M	M12 Power connection cable coupling L-coded, angled, unshielded, drag chain capable PUR
RKWT 5L-727/... M	M12 Power connection cable coupling L-coded, angled, unshielded, drag chain capable PUR
RKWT 5L-738/... M	M12 Power connection cable coupling L-coded, angled, unshielded PUR
RKWTS 5L-724/... M	M12 Power connection cable coupling L-coded, angled, shielded, drag chain capable PUR
RKWTS 5L-725/... M	M12 Power connection cable coupling L-coded, angled, shielded, drag chain capable PUR
RKWTS 5L-737/... M	M12 Power connection cable coupling L-coded, angled, shielded PUR
RST 5L-726/... M	M12 Power connection cable connector L-coded, unshielded, drag chain capable PUR
RST 5L-727/... M	M12 Power connection cable connector L-coded, unshielded, drag chain capable PUR
RST 5L-738/... M	M12 Power connection cable connector L-coded, unshielded PUR
RSTS 5L-724/... M	M12 Power connection cable connector L-coded, shielded, drag chain capable PUR
RSTS 5L-725/... M	M12 Power connection cable connector L-coded, shielded, drag chain capable PUR
RSTS 5L-737/... M	M12 Power connection cable connector L-coded, shielded PUR
RSWT 5L-726/... M	M12 Power connection cable connector L-coded, unshielded, drag chain capable PUR
RSWT 5L-727/... M	M12 Power connection cable connector L-coded, unshielded, drag chain capable PUR
RSWT 5L-738/... M	M12 Power connection cable connector L-coded, unshielded PUR
RSWTS 5L-724/... M	M12 Power connection cable connector L-coded, shielded, drag chain capable PUR
RSWTS 5L-725/... M	M12 Power connection cable connector L-coded, shielded, drag chain capable PUR
RSWTS 5L-737/... M	M12 Power connection cable connector L-coded, shielded PUR

Table 54: Connection cables for the power supply

Item number	Description
RKCCS 5L/11 3-6	M12 Power assembly-capable coupling L-coded, straight, shielded, cable grommet 3-6 mm, connection type Crimp
RKCCS 5L/11 5-9	M12 Power assembly-capable coupling L-coded, straight, shielded, cable grommet 5-9mm, connection type Crimp
RKCCS 5L/11 8-11	M12 Power assembly-capable coupling L-coded, straight, shielded, cable grommet 8-11mm, connection type Crimp
RKCWCS 5L/11 3-6	M12 Power assembly-capable coupling L-coded, angled, shielded, cable grommet 3-6 mm, connection type Crimp
RKCWCS 5L/11 5-9	M12 Power assembly-capable coupling L-coded, angled, shielded, cable grommet 5-9mm, connection type Crimp
RKCWCS 5L/11 8-11	M12 Power assembly-capable coupling L-coded, angled, shielded, cable grommet 8-11mm, connection type Crimp
RSCCS 5L/11 3-6	M12 Power assembly-capable connector L-coded, straight, shielded, cable grommet 3-6 mm, connection type Crimp
RSCCS 5L/11 5-9	M12 Power assembly-capable connector L-coded, straight, shielded, cable grommet 5-9mm, connection type Crimp
RSCCS 5L/11 8-11	M12 Power assembly-capable connector L-coded, straight, shielded, cable grommet 8-11mm, connection type Crimp
RSCWCS 5L/11 3-6	M12 Power assembly-capable connector L-coded, angled, shielded, cable grommet 3-6 mm, connection type Crimp
RSCWCS 5L/11 5-9	M12 Power assembly-capable connector L-coded, angled, shielded, cable grommet 5-9mm, connection type Crimp
RSCWCS 5L/11 8-11	M12 Power assembly-capable connector L-coded, angled, shielded, cable grommet 8-11mm, connection type Crimp

Table 55: Assembly-capable connectors - M12 Power

Item number	Description
	Universal screw-on type adapter
ZVK	M12 covers
ZVK Power	M12 Power covers
ZBR 9/40	Labels 60
	Labels 30

Table 56: Other accessories